

P250/1
GEOGRAPHY
(Physical Geography)
Paper 1
JULY/AUGUST, 2023
3 hours



MATIGO MOCK EXAMINATIONS BOARD
Uganda Advanced Certificate of Education
GEOGRAPHY

(PHYSICAL GEOGRAPHY)

Paper 1

3 hours

INSTRUCTIONS TO CANDIDATES:

This paper consists of three sections, A, B and C.

*Answer **four** questions.*

Section A is compulsory.

Answer one question from section B and one question from section C.

Any additional question (s) attempted will not be marked.

Credit will be given for use of relevant sketch-maps, diagrams and specific examples studied in the field.

Turn Over

SECTION A

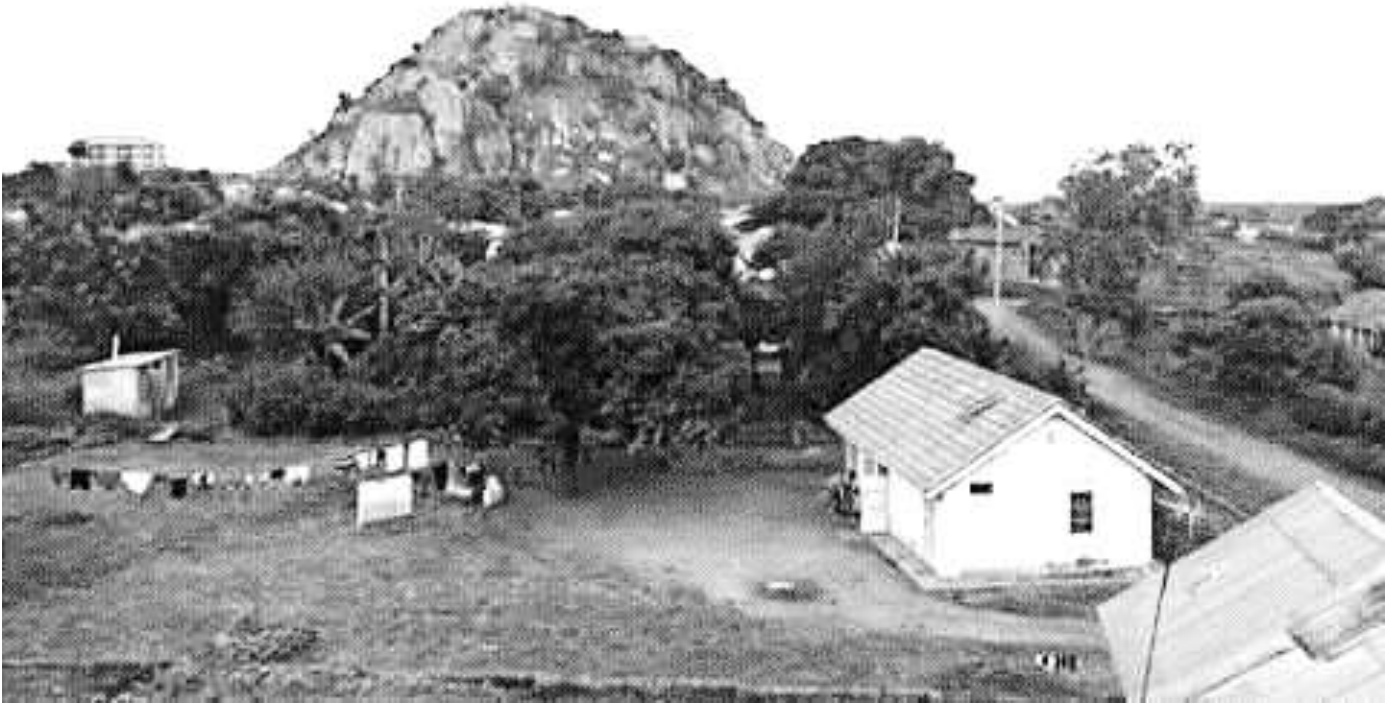
Questions 1 and 2 are compulsory

COMPULSORY MAP WORK

1. Study the **1:50,000(Uganda) ALEREK map extract**, part of sheet **25/1** series **Y732** edition 4 D.O.S and answer the questions that follow:
- (a) (i) Identify the man –made feature found at grid reference **802091**. (01 mark)
(ii) State the grid reference of the air photo principal point on Kakuta ridge in the North East. (01 mark)
- (b) Reduce the area shown on the map extract by **0.4** times. Draw its sketch and on it, mark and label:
(i) Two relief regions.
(ii) Two drainage features.
(iii) One transport route. (09 marks)
- (c) Calculate the;
(i) New scale for the map drawn. (02 marks)
(ii) Describe the relief of the area shown on the map extract. (07 marks)
- (d) Giving evidence from the map extract, identify the problems faced by the people living in the area. (05 marks)

**COMPULSORY
PHOTOGRAPH INTERPRETATION**

2. Study the photograph provided below and answer the questions that follow.



- (a) Draw a land scape sketch of the area shown on the photograph and on it mark and name:
- (i) Only two relief regions
 - (ii) Any three land use types
 - (iii) Any two vegetation types (10 marks)
- (b) Account for the formation of the land form feature in the back ground. (07 marks)
- (c) Explain the relationship between relief and land use in the area shown in the photograph. (06 marks)
- (d) Giving reasons for your answer suggest an area in East Africa where this photograph could have been taken. (02 marks)

SECTION B

*Answer **one** question from this section*

3. (a) Distinguish between Tectonic movements and diastrophic movements. (06 marks)
 (b) with reference to specific examples from East Africa, examine the effect of faulting on the land scape. (19 marks)
4. Account for the formation of land forms associated with the glacial trough in East Africa. (25 marks)
5. (a) Distinguish between emergence and submergence of coastlines. (06 marks)
 (b) Account for the occurrence of Eustatic changes. (19 marks)

SECTION C

*Answer **one** question from this section*

6. (a) Distinguish between mist and hail. (07 marks)
 (b) Account for the formation of convectional rainfall in East Africa. (18 marks)
7. (a) Describe the characteristics of papyrus vegetation. (10 marks)
 (b) Explain the conditions that have influenced the distribution of papyrus vegetation in East Africa. (15 marks)
8. Examine the processes and effects of soil erosion in East Africa. (25 marks)

END

(+256780413120)