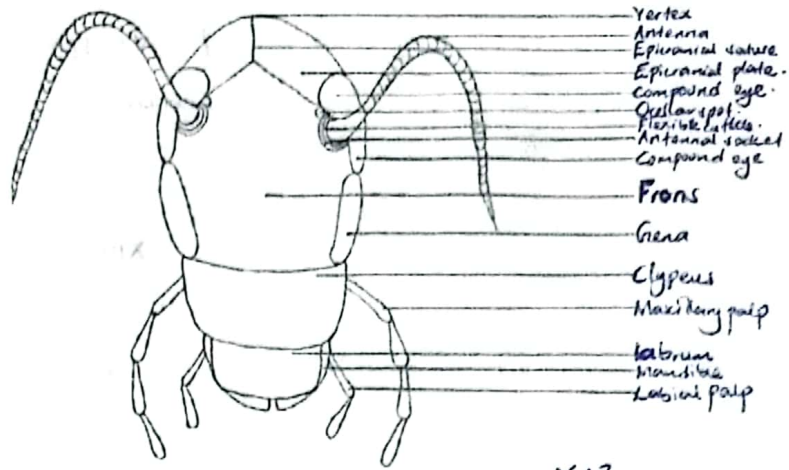


SSENTONGO RASHID

20/10/2023
Ques Ques

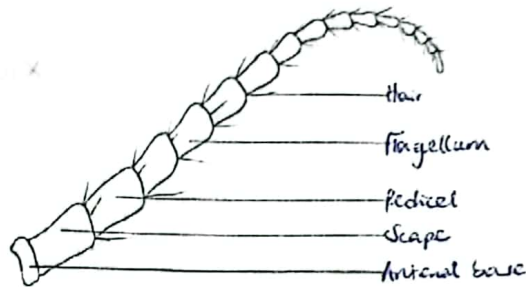
A GUIDE TO DISSECTION

① A drawing of the anterior view of the head of a cockroach.



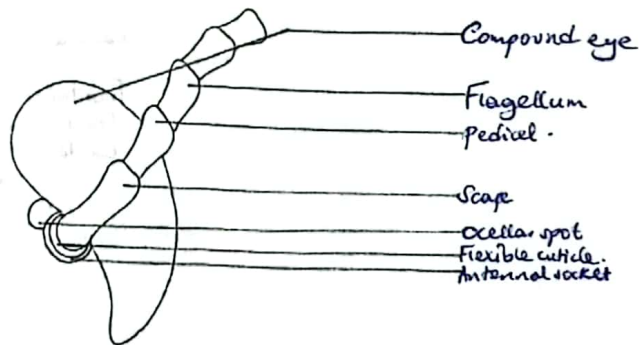
X13

② A drawing of the antenna of a cockroach.



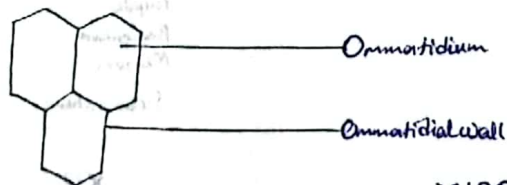
X8

③ A drawing of the left compound eye with the first five segments of the antenna.



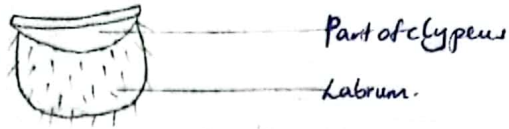
X40

④ A drawing of three units of a compound eye of a cockroach viewed under a compound microscope.



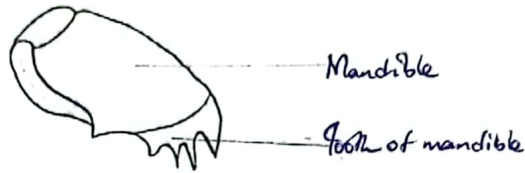
X100

5) A drawing of the labrum of a cockroach using a microscope.



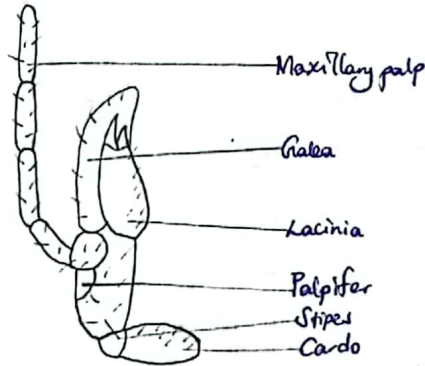
X10

6) A drawing of a ^{left} mandible of a cockroach using a hand lens.



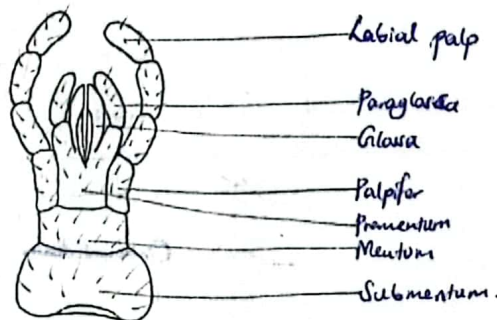
X10

7) A drawing of a maxilla of a cockroach using a ~~microscope~~ hand lens.



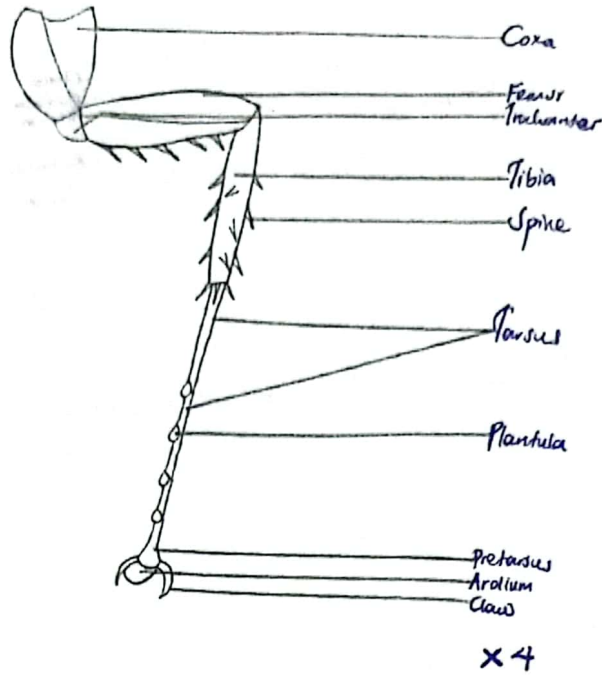
X10

8) A drawing of the labium of a cockroach.

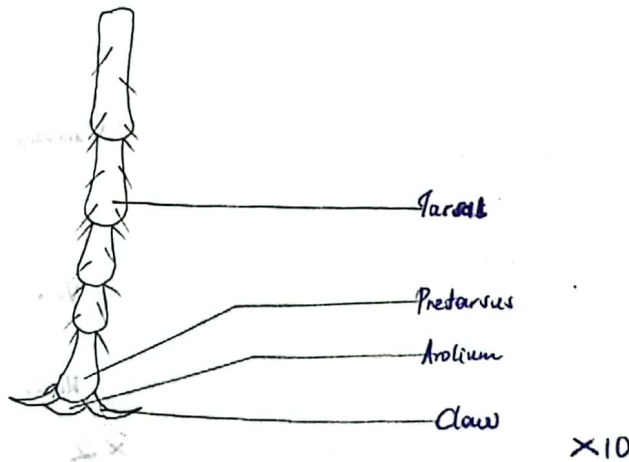


X12

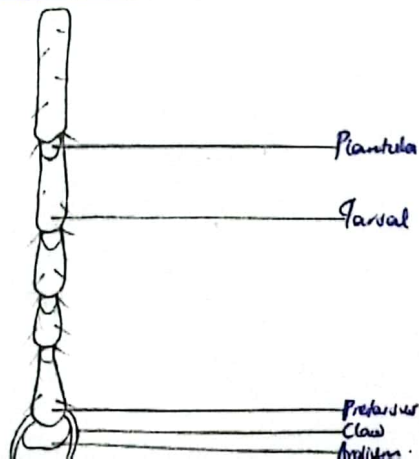
9) A drawing of the hind leg of a cockroach and its structures.



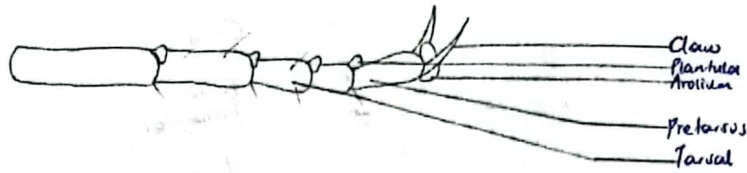
10) A drawing showing the
A drawing of the posterior view of the foot of a cockroach.



11) A drawing of the front view of the foot of the cockroach.

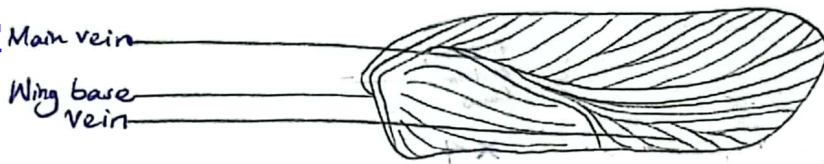


⑫ A drawing of the lateral view of a foot of the cockroach.



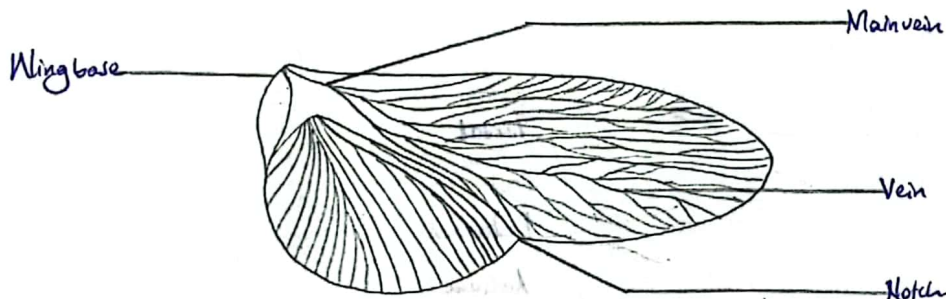
X 10

⑬ A drawing of the outer wing of a cockroach.



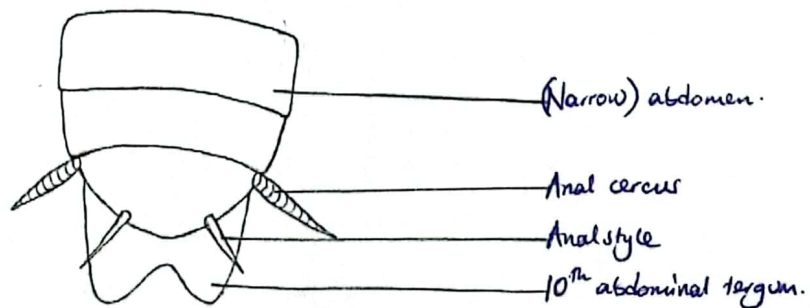
X 2

⑭ A drawing of the inner wing of a cockroach.



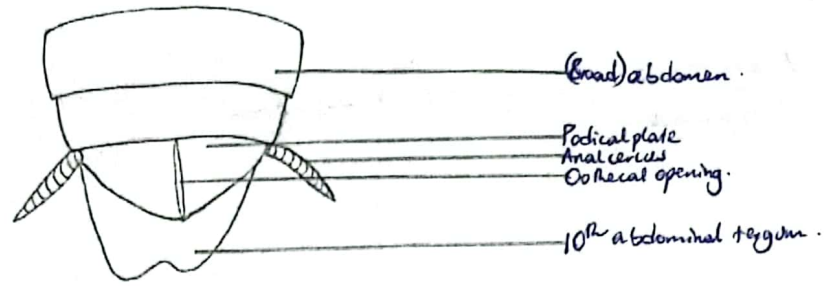
X 2

⑮ A drawing of the ventral view of the posterior end of the abdomen of a male cockroach.



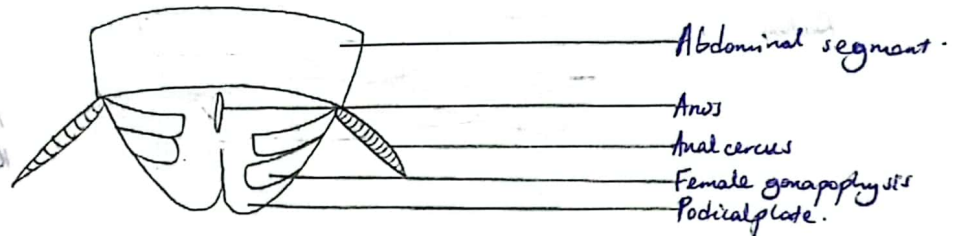
X 3

16 A drawing of the posterior end of the abdomen of a female cockroach in ventral view.



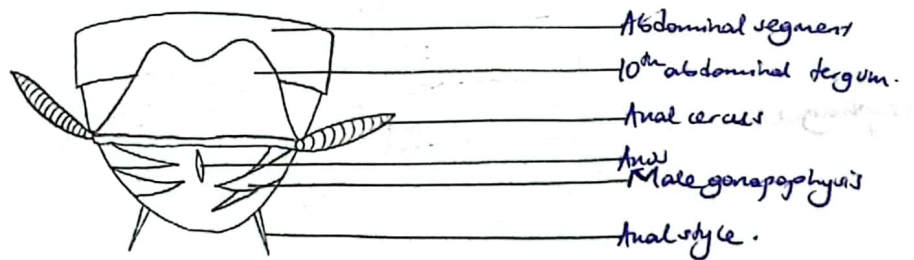
X3

17 A drawing of the structures at the distal end of the abdomen after cutting off the 10th tergum of a male cockroach.



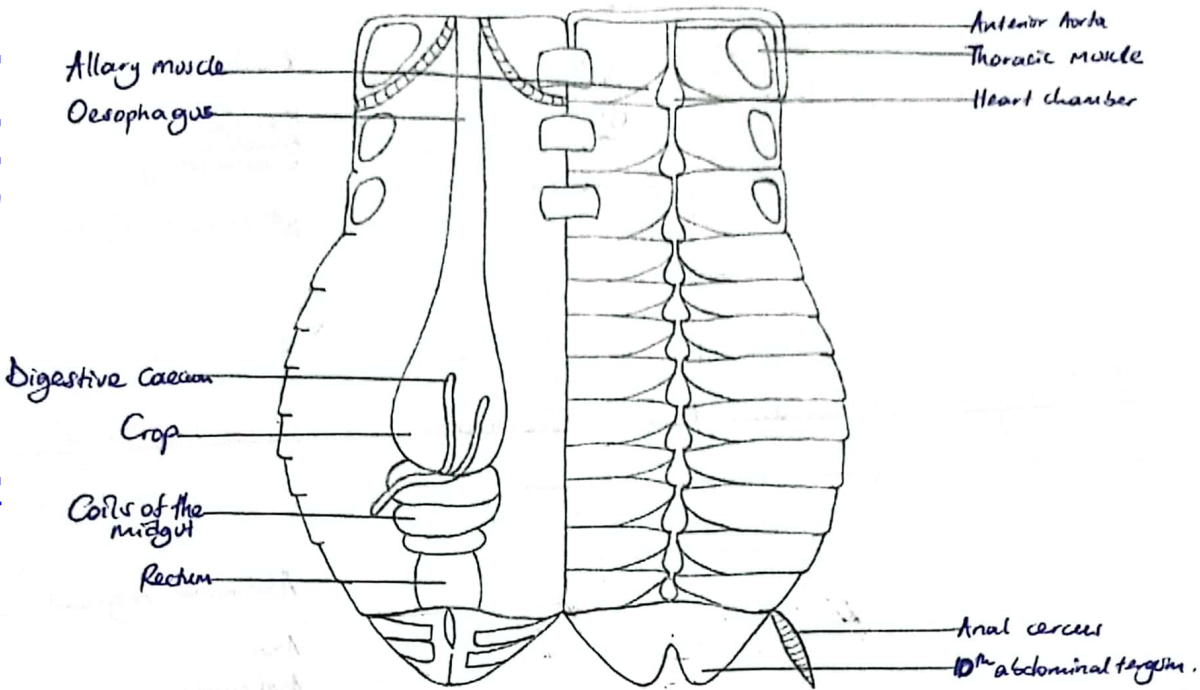
X3

18 A drawing ^{of} showing the structures at the distal end of the abdomen of a male cockroach after lifting up the 10th tergum.



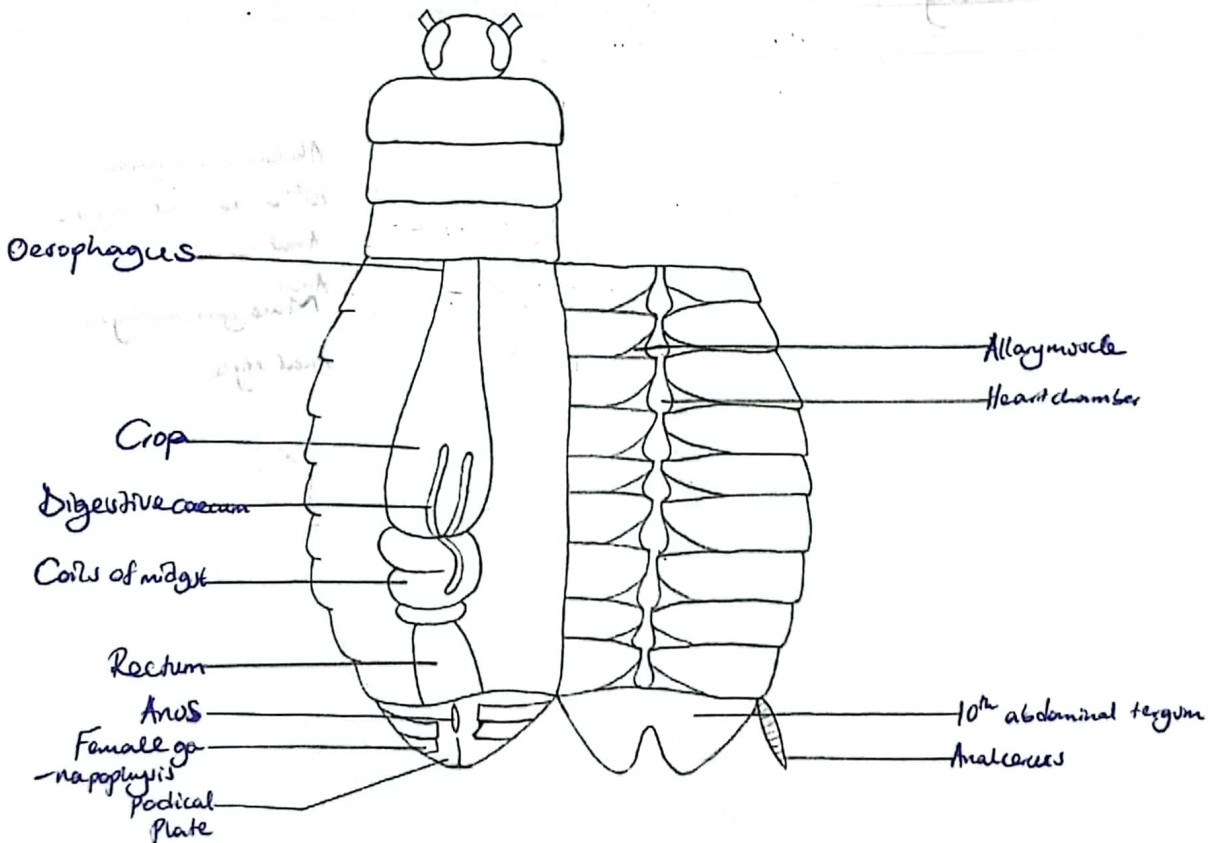
X3

19) A drawing of the alimentary canal in undisplaced state, and the structures on the dorsal cuticle of a cockroach.



x 3

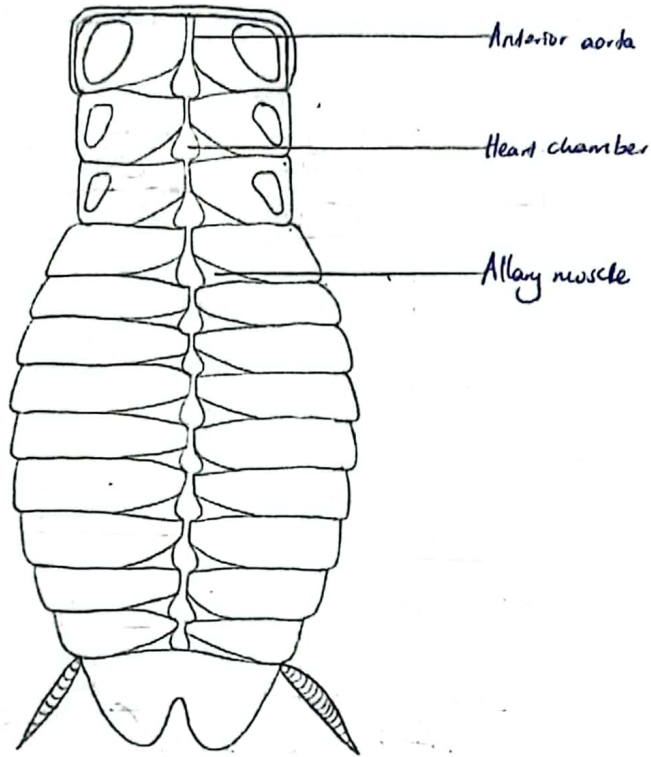
20) A drawing showing the structures in the abdominal region of a cockroach without displacing any structures.



x 3

21

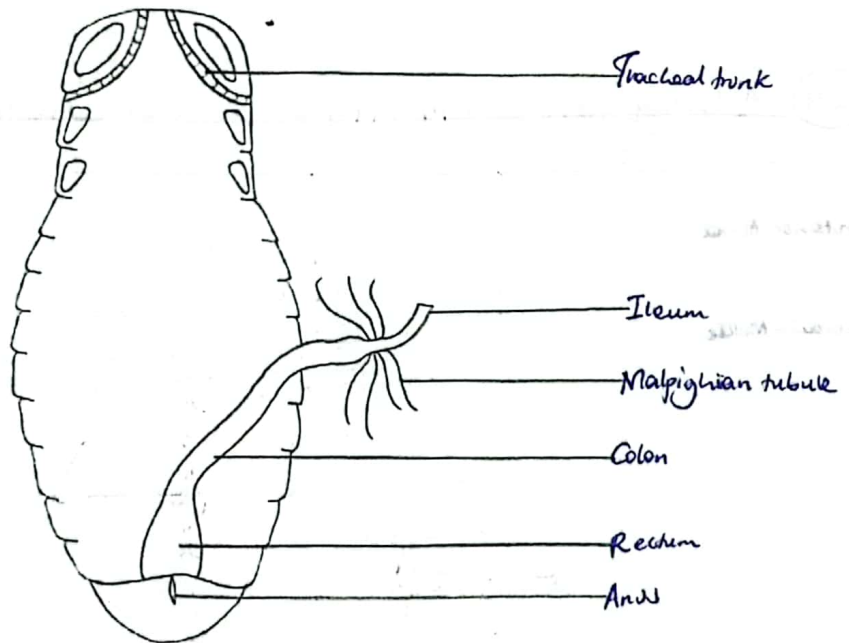
A drawing showing the circulatory system of a cockroach.



X 3.5

22

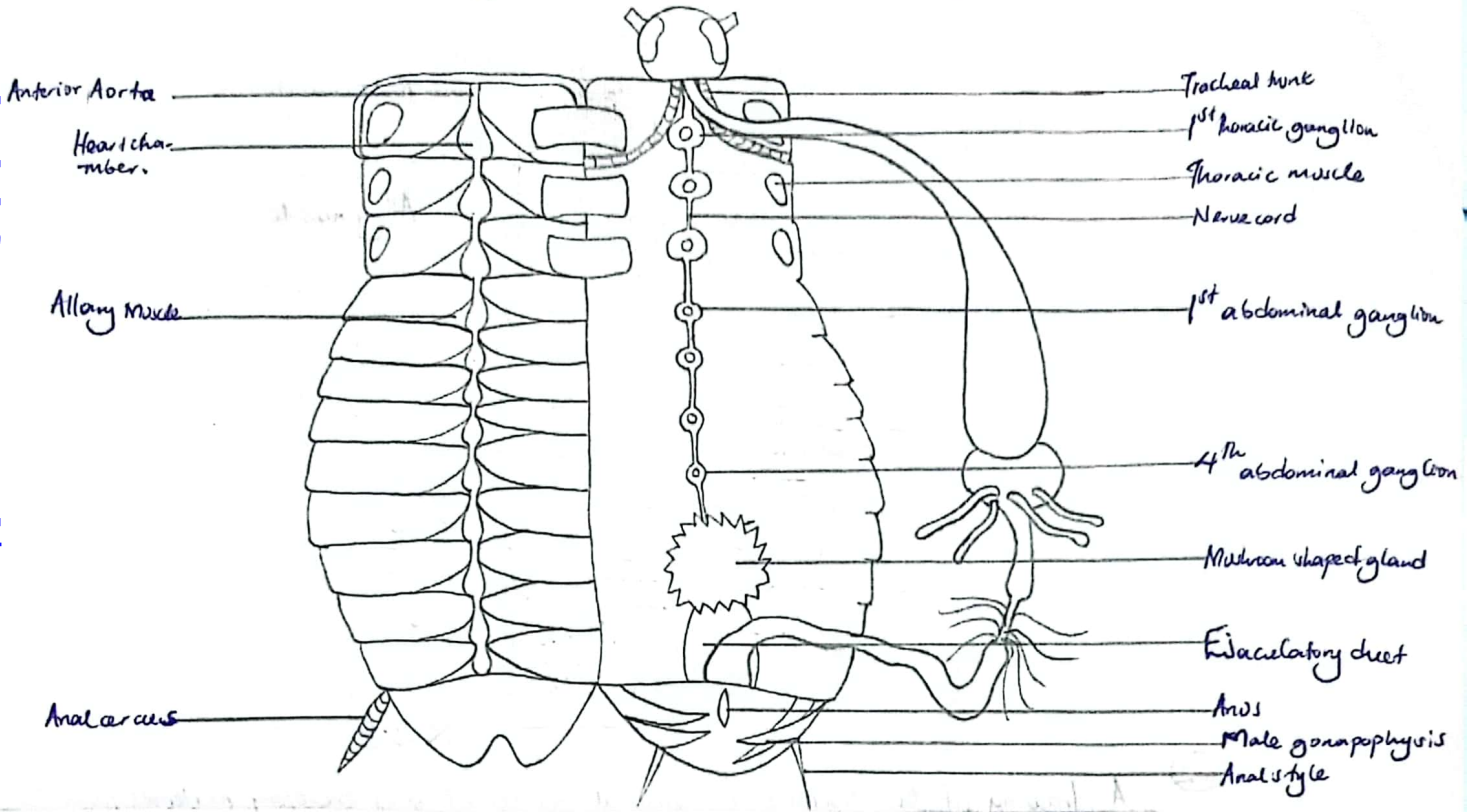
A drawing of the structures for removal undigested and excretory materials from the body of a cockroach.



X 3

23

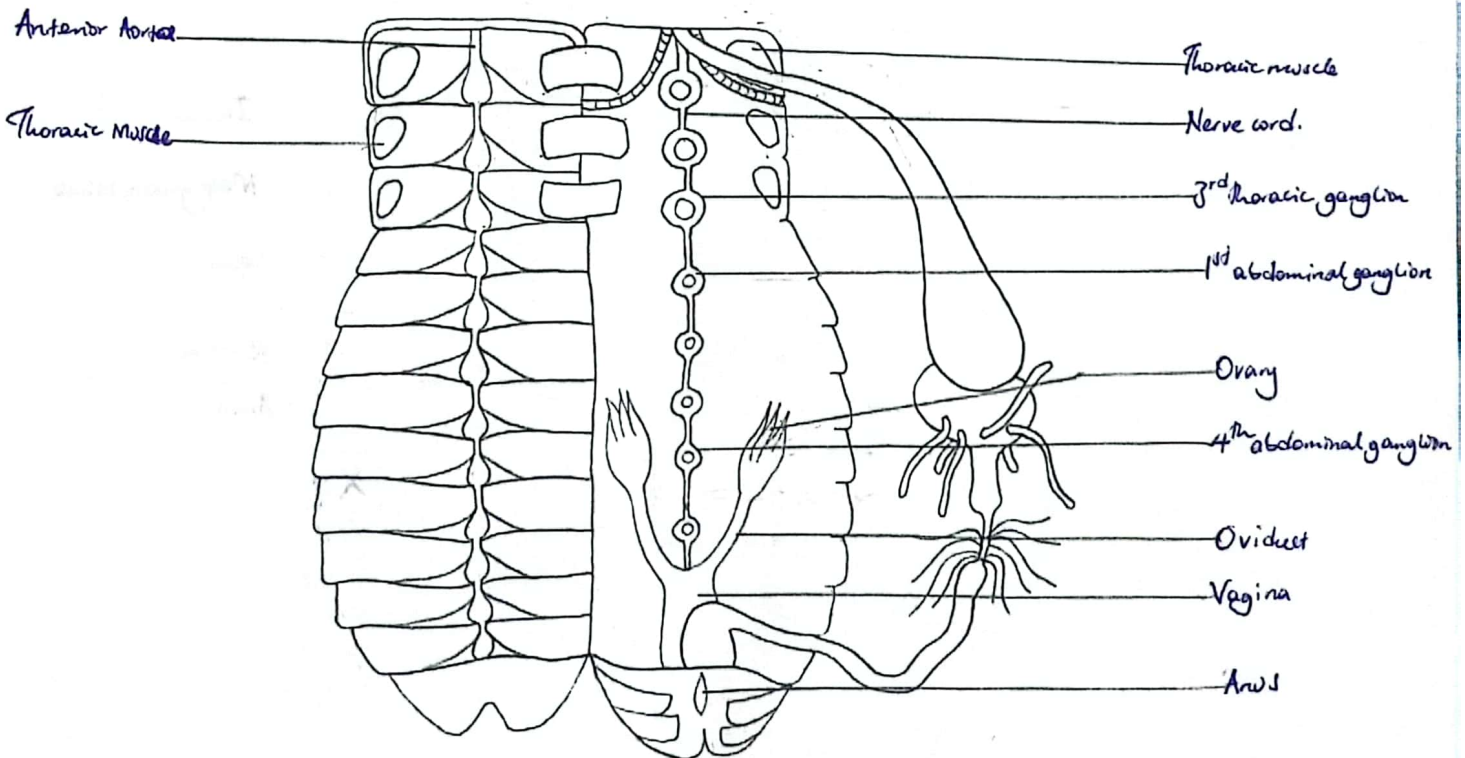
A drawing of the structures associated with the dorsal and ventral cuticle of the ^{left} cockroach when the alimentary canal is displaced to the ~~right~~ ^{right}.



X 3.5

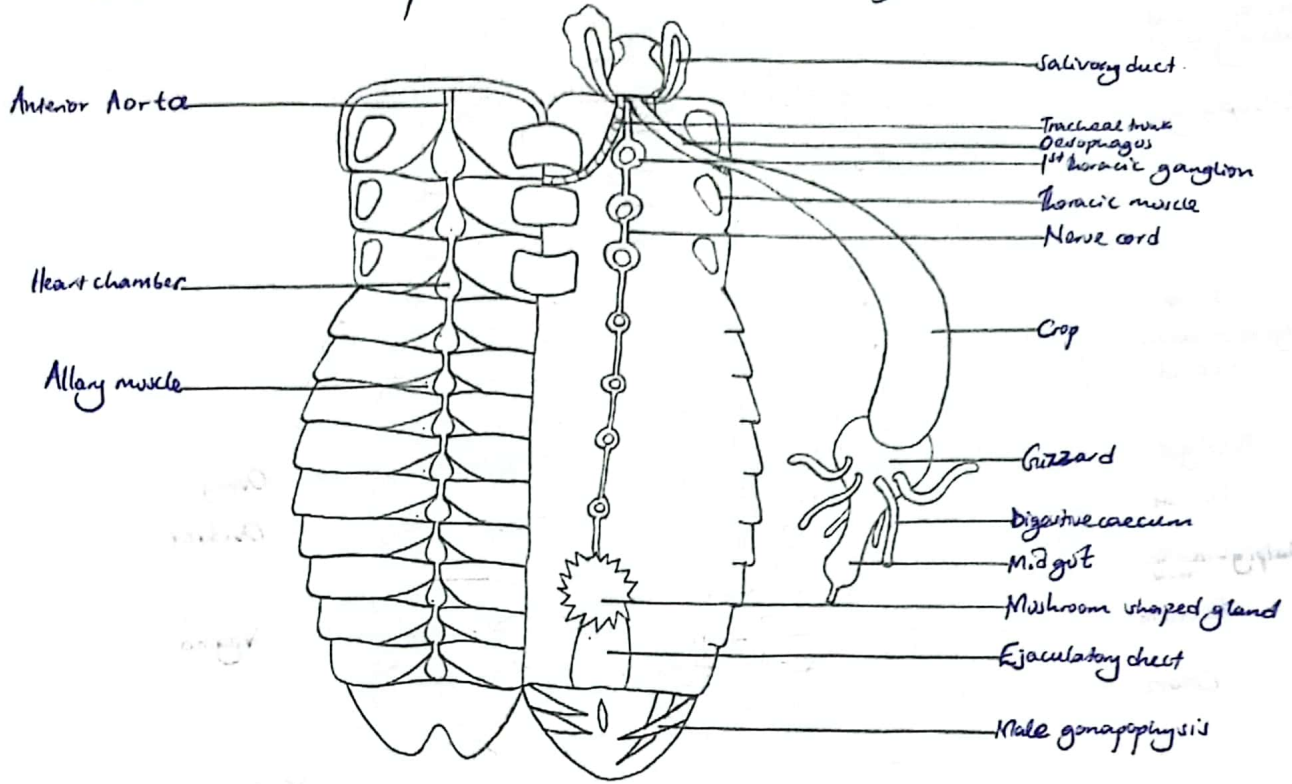
24

A drawing of the structures associated with the dorsal and ventral cuticle of a female cockroach when the alimentary canal is displaced to the right.



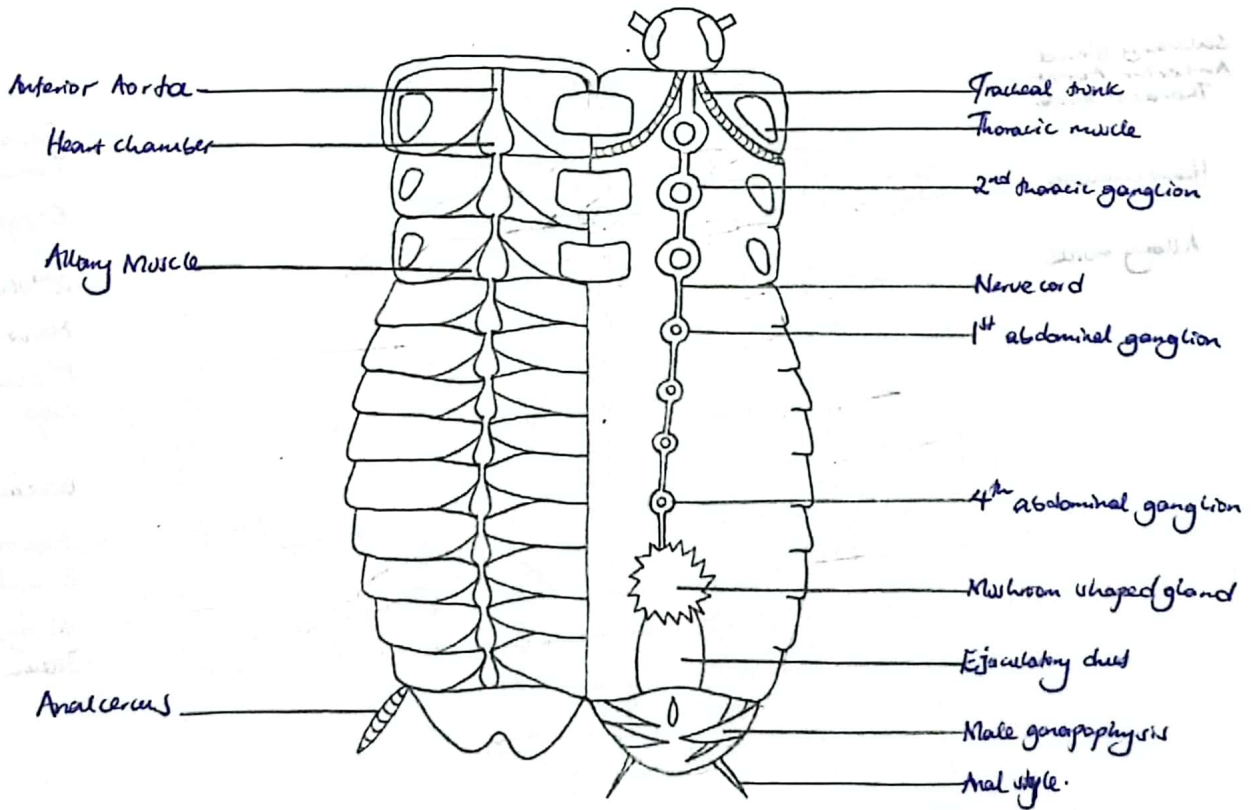
25

A drawing of the internal structures associated with the dorsal cuticle and ventral cuticle of a cockroach with parts of the gut not involved in digestion of food cut out.



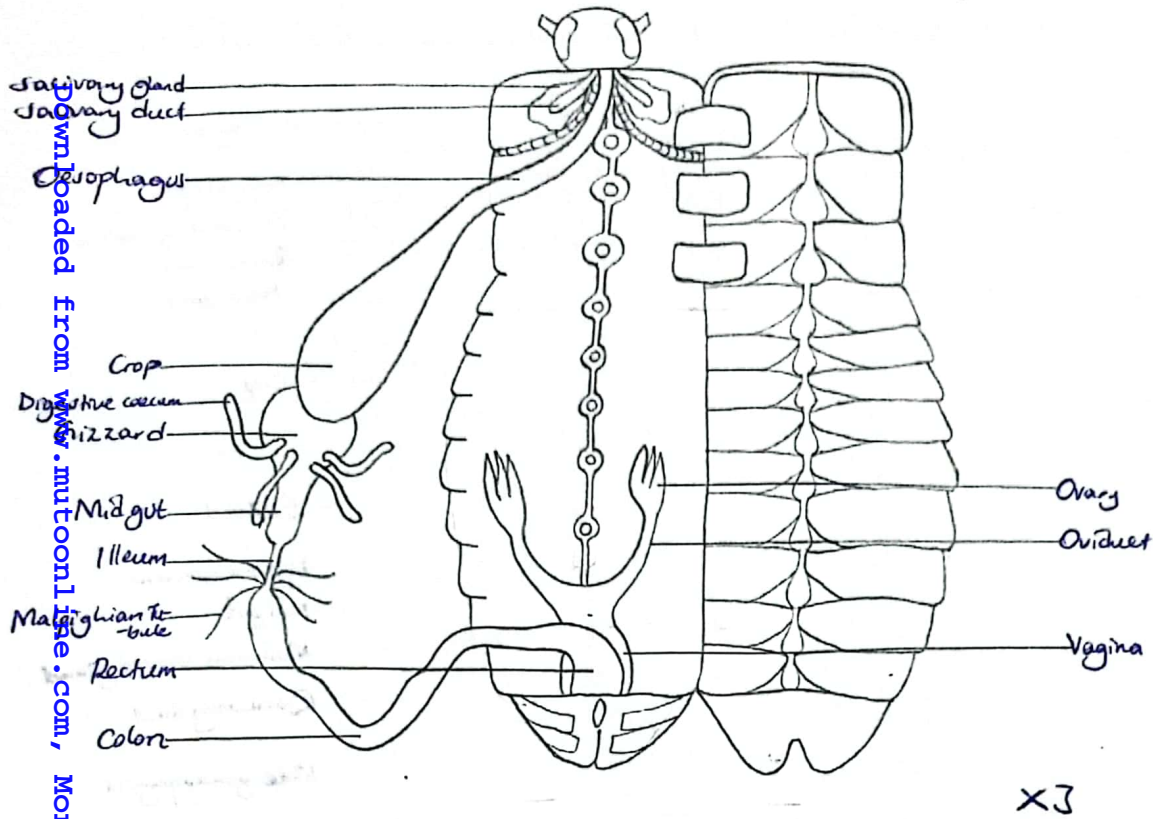
X3

26 A drawing of the structures associated with dorsal cuticle and ventral cuticle after the alimentary canal has been discarded from a cockroach.



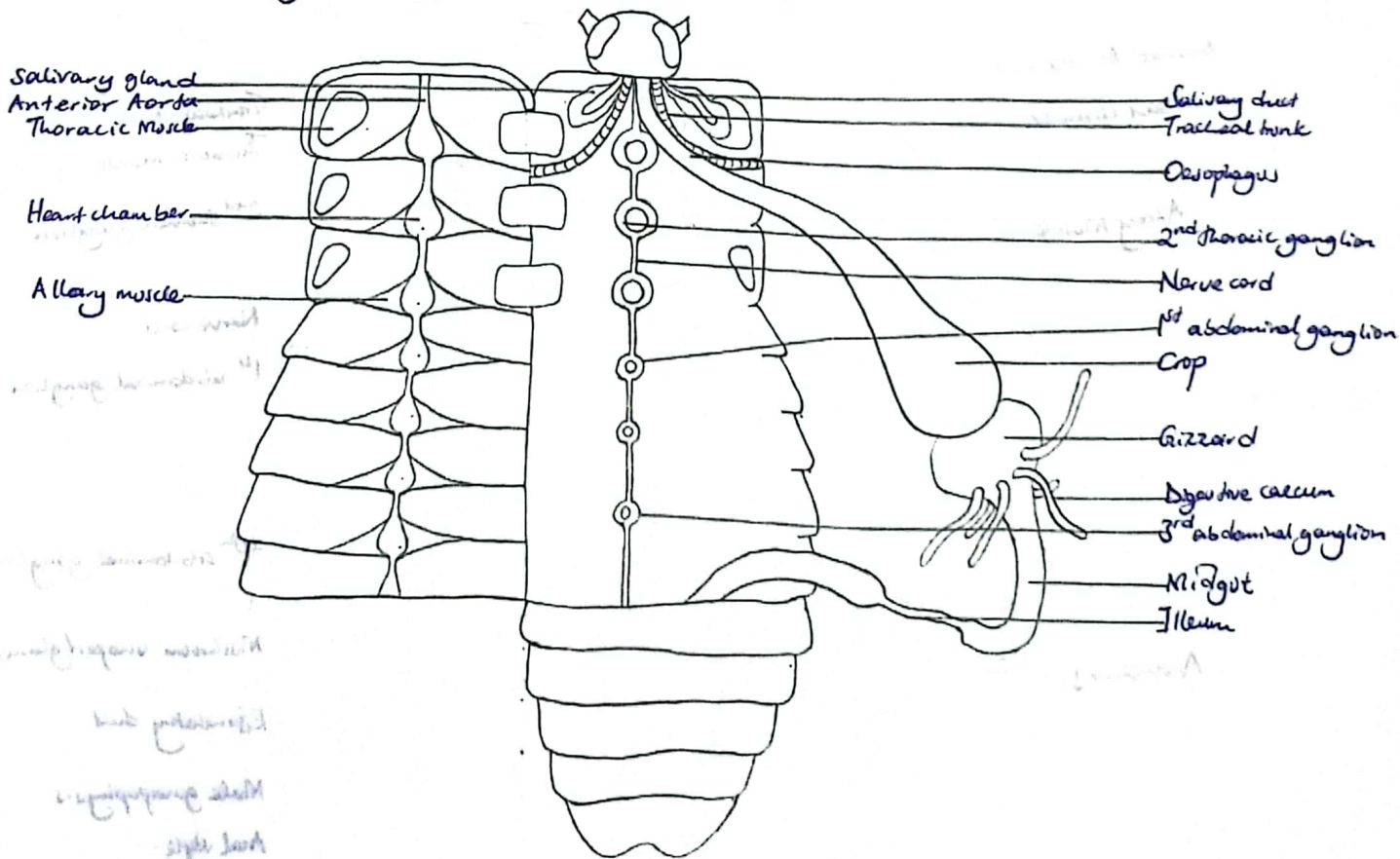
X3

27 A drawing of the buoyant structures with the alimentary canal to the left of the coxistae



X3

28 A drawing of the internal structures after opening the thoracic region and first five abdominal segments with the alimentary canal displaced to the right side of the specimen.

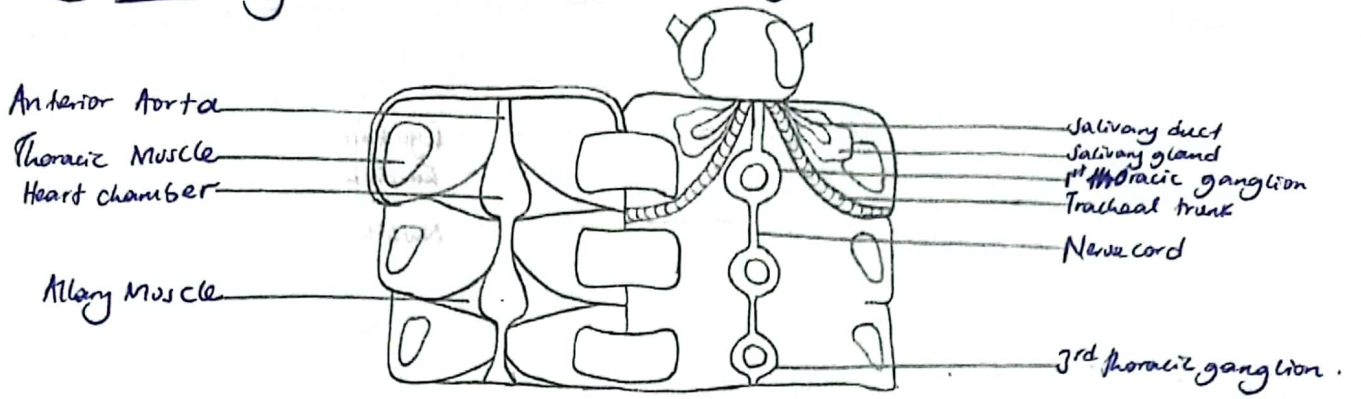


X4

Downloaded from www.mutoonlive.com, More PASTPAPERS are available

(29)

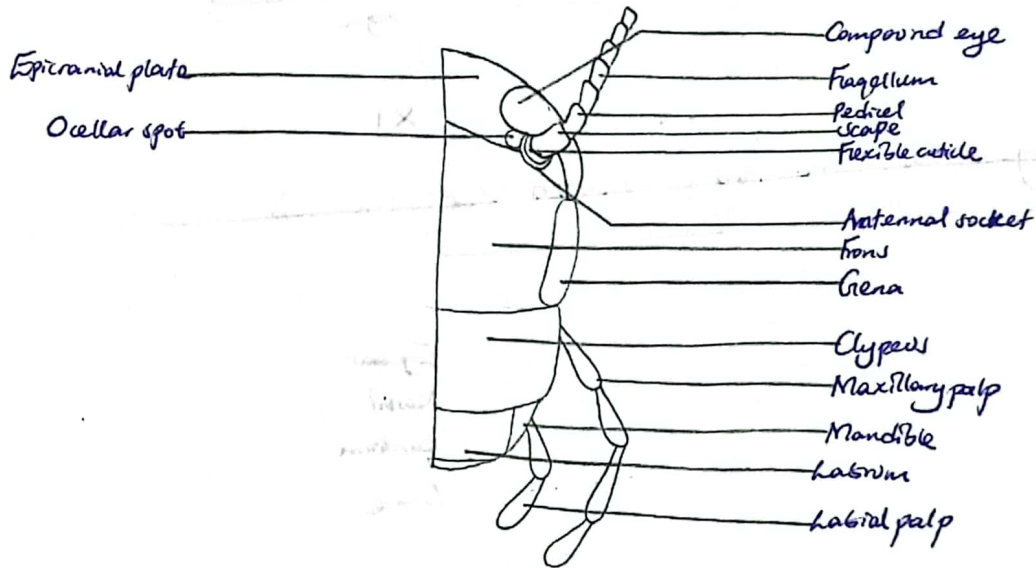
A drawing of the structures in the thoracic region with the gut cut out.



X 4

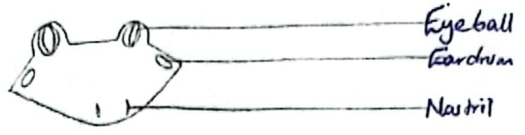
(30)

A drawing of the left anterior part of the head of specimen P (cockroach)



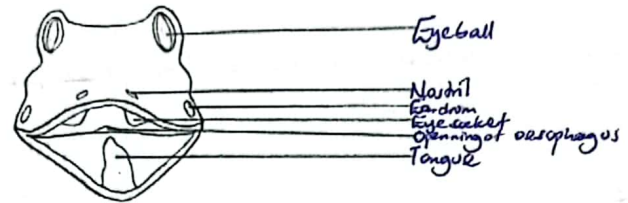
X 10

31) A drawing of the anterior view of the head of a ~~toad~~ ^{toad} with the mouth closed.



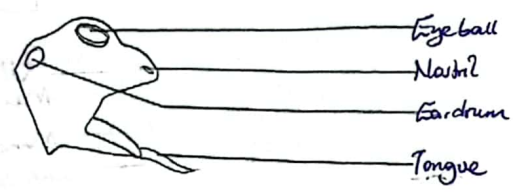
X1

32) A drawing of the anterior view of the head of a toad with the mouth fully opened.



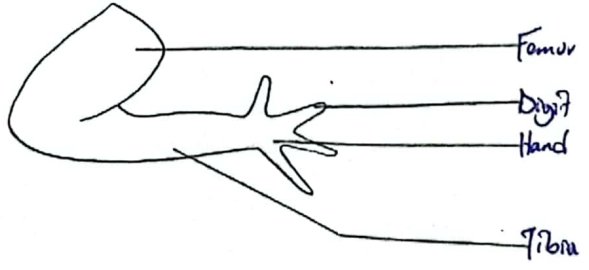
X1

33) A drawing of the lateral view of the head of a toad with the mouth opened and tongue pulled out from right side of the specimen.



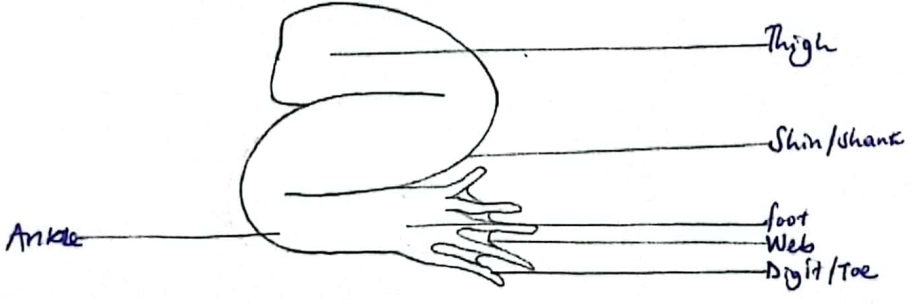
X1

34) A drawing of the fore limb of a toad at rest.



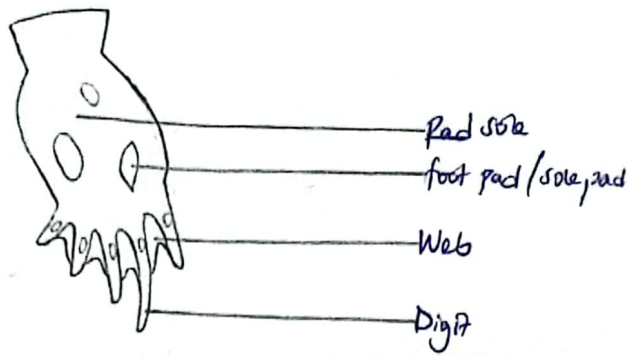
X1

35) A drawing of the hind limb of a toad at rest.



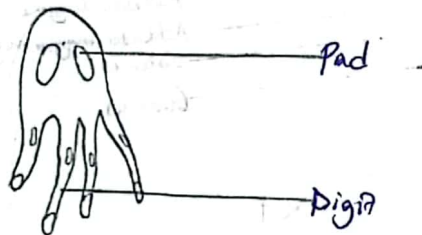
Downloaded from www.mtutoonline.com, More PASTPAPERS are available

36 A drawing of the ventral view of the right hind foot of a toad.



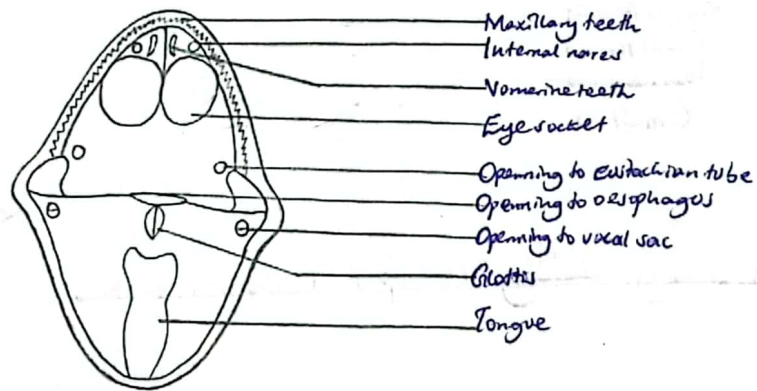
X1

37 A drawing of the ventral view of the left fore foot of a toad.



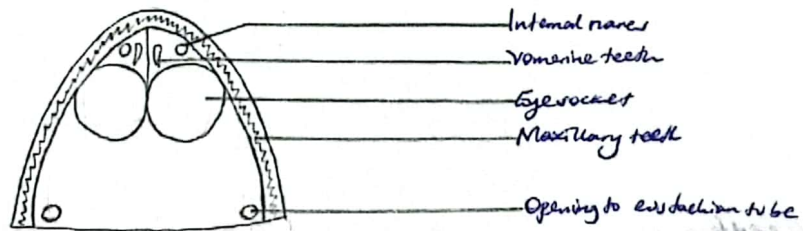
X1

38 A drawing of the structures on the roof and floor of the buccal cavity of a toad when fully opened.



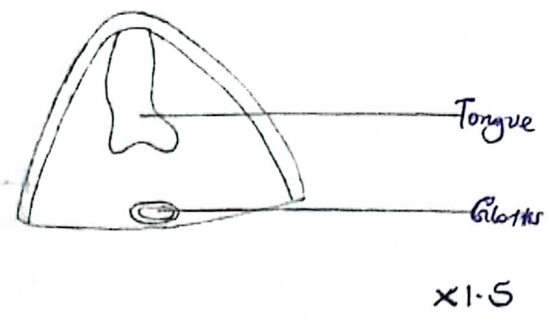
X1

39 A drawing of the structures on the roof of the buccal cavity of the toad.

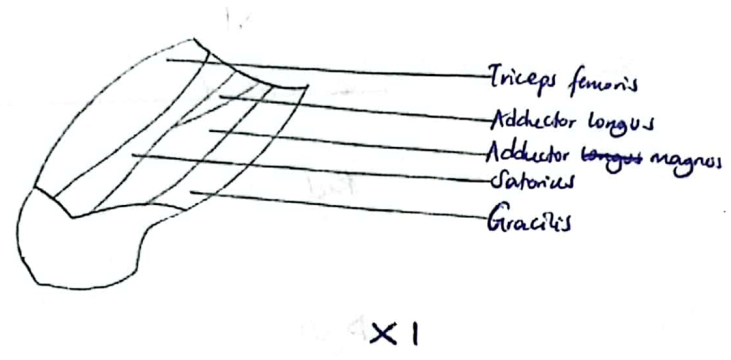


X1.5

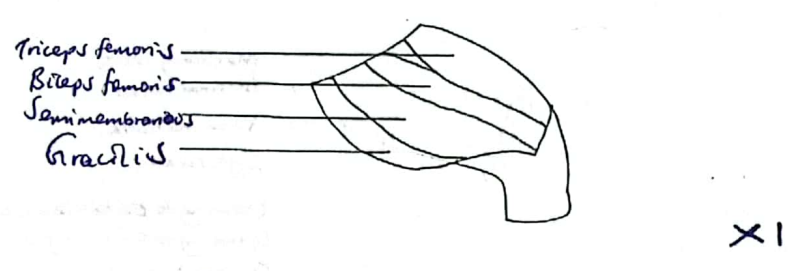
40) A drawing of the structures on the floor of the buccal cavity.



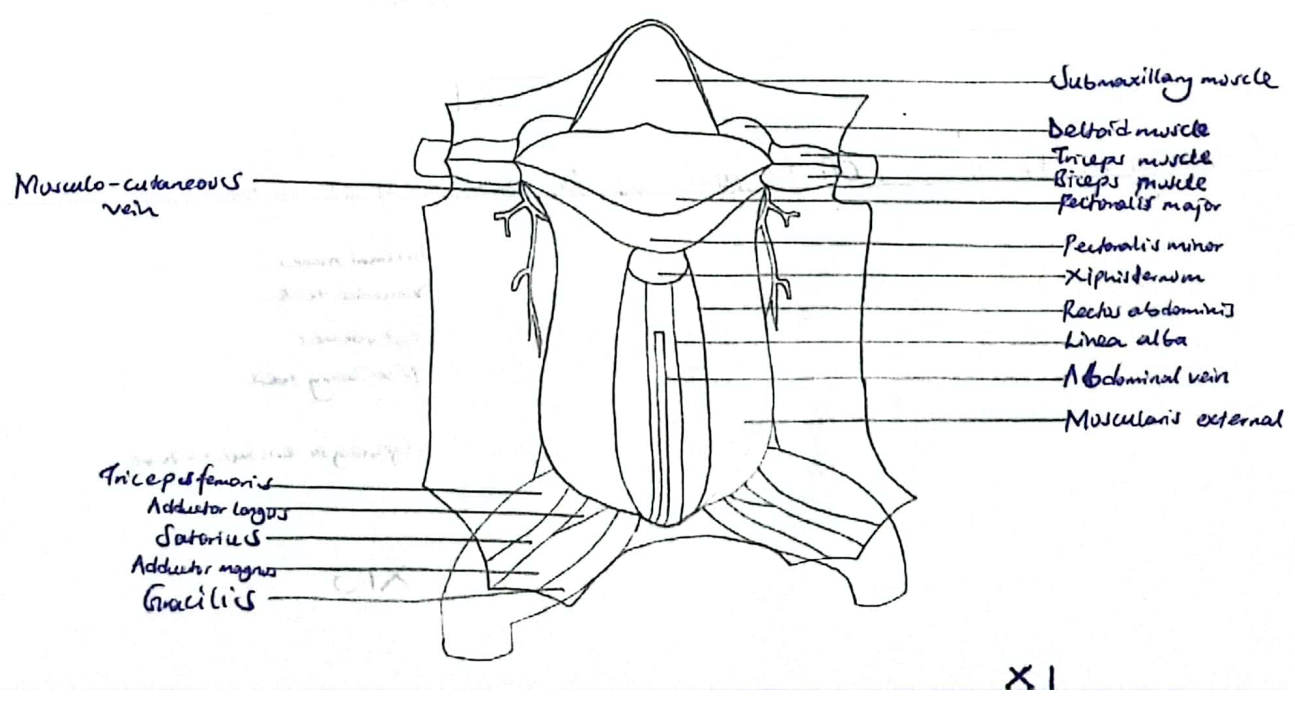
41) A drawing of the thigh muscles from the ventral side of the toad.



42) A drawing of the thigh muscles from the dorsal view side of the toad.

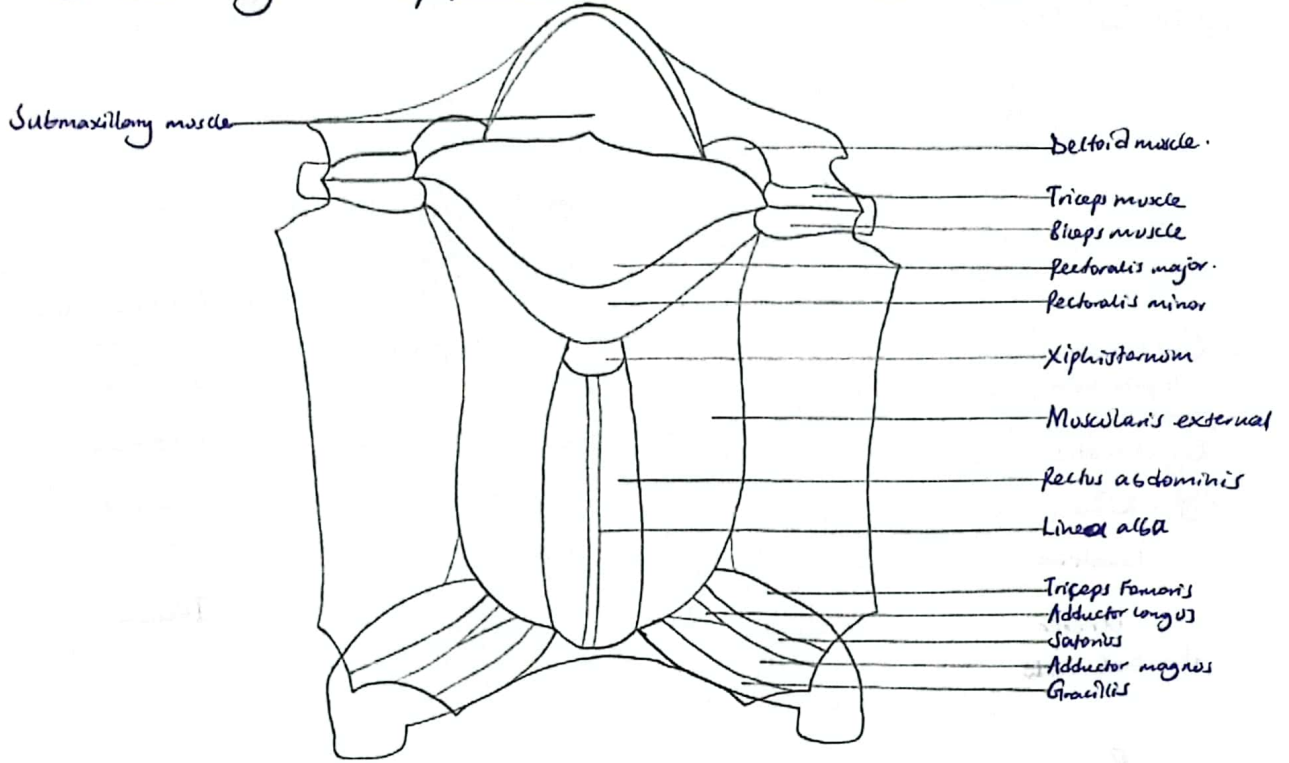


43) A drawing showing the superficial structures on the ventral side of the toad.



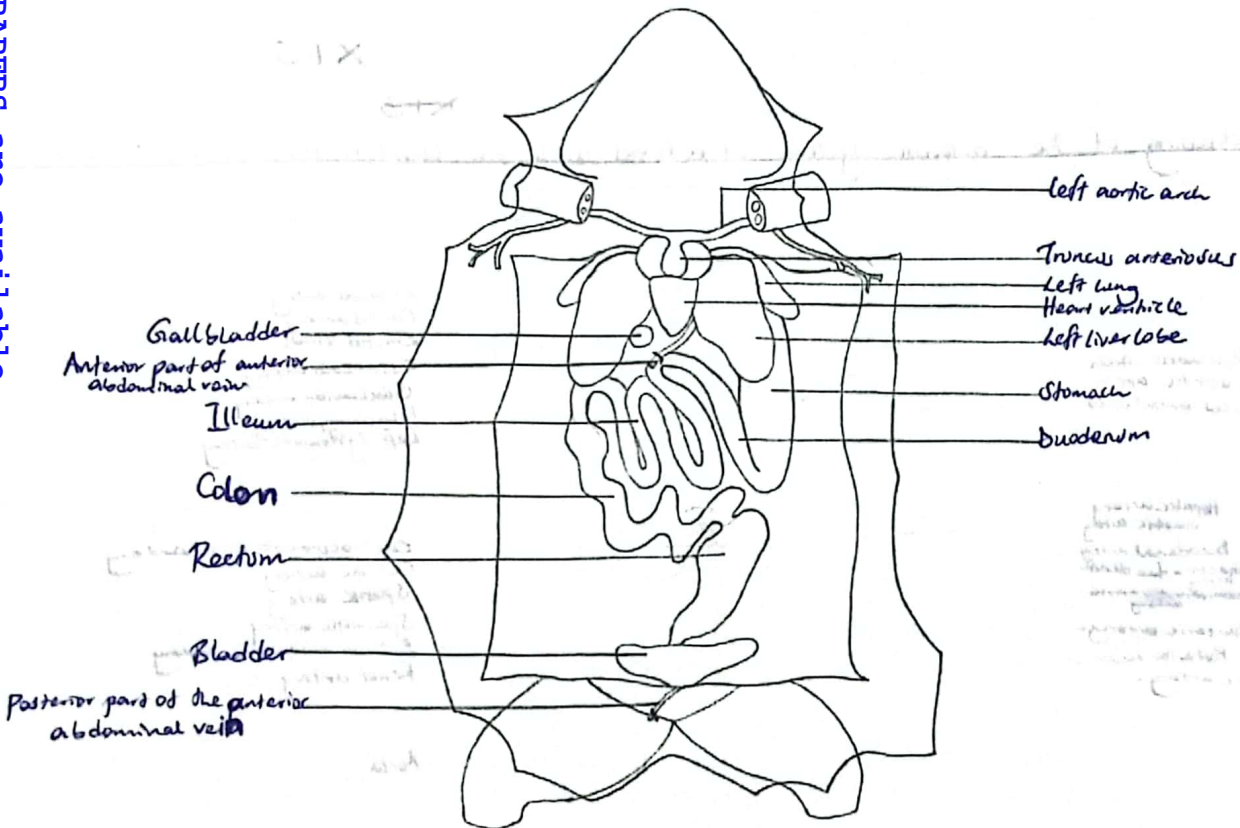
Downloaded from www.mtutoonline.com, More PASTPAPERS are available

(44) A drawing of the superficial muscles on the ventral side of the toad.



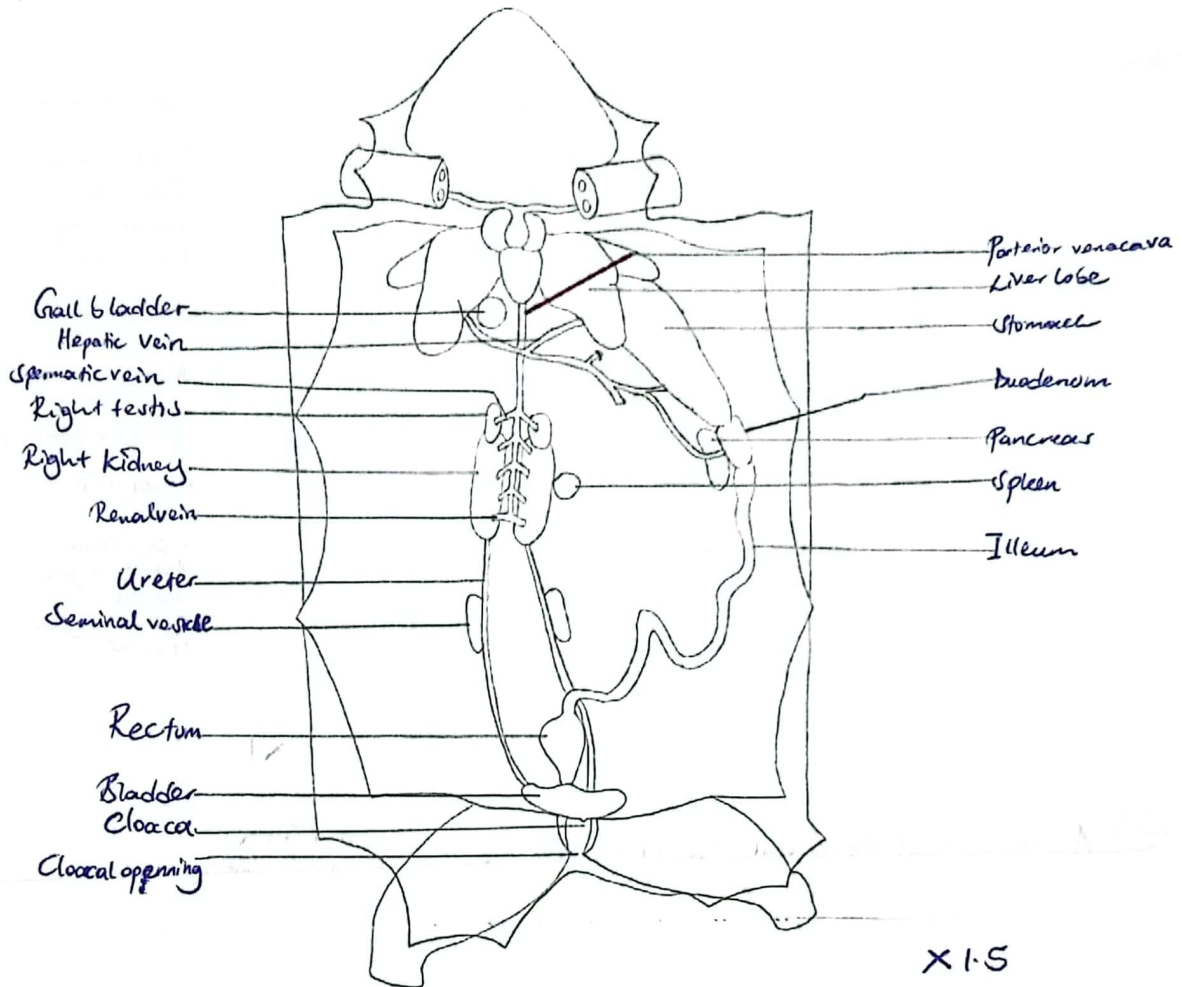
XI

(45) A drawing of the visceral structures in ~~the~~ ^{and thorax} the abdomen of the toad, in situ.



XI

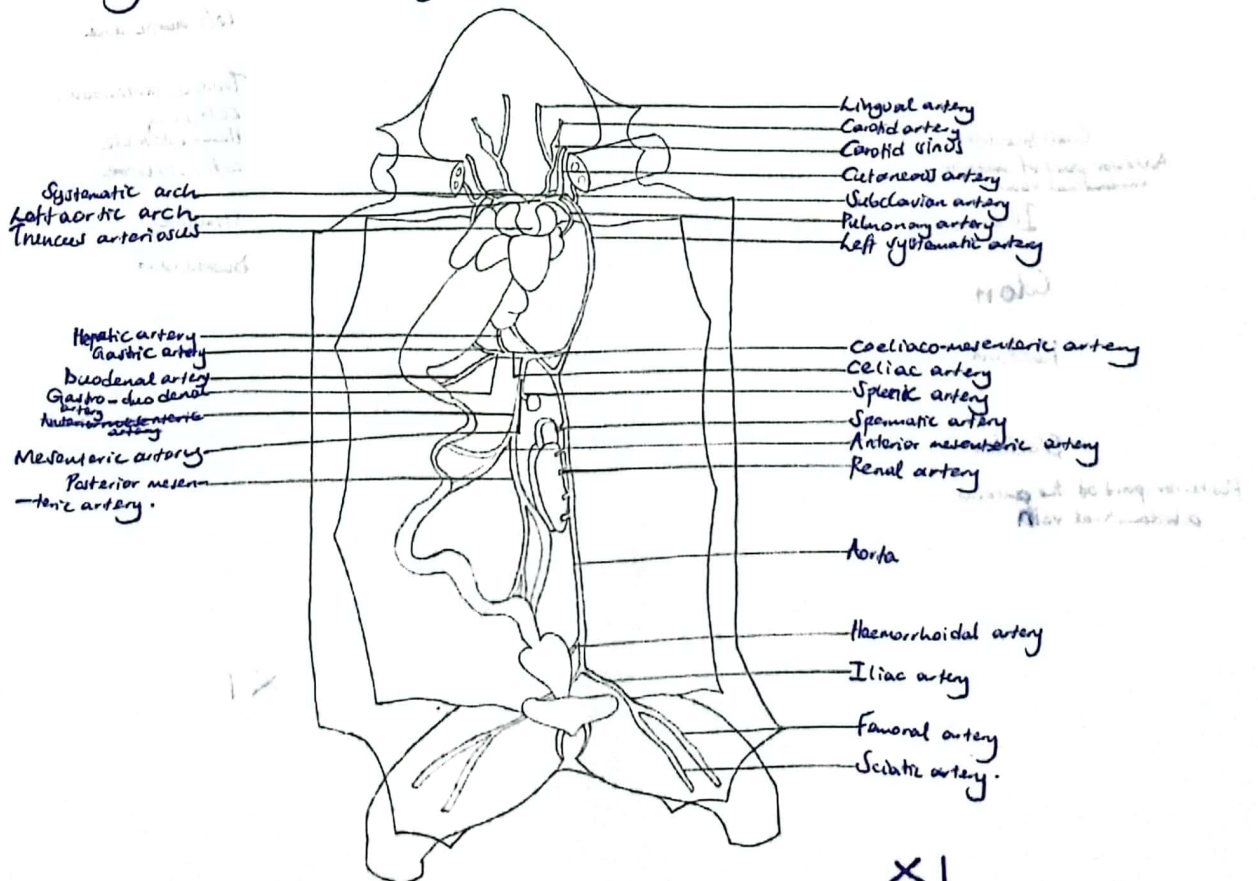
46) A drawing of the abdominal and pelvic structures in a toad after displacing the gut to the left of the specimen.



X1.5

X15

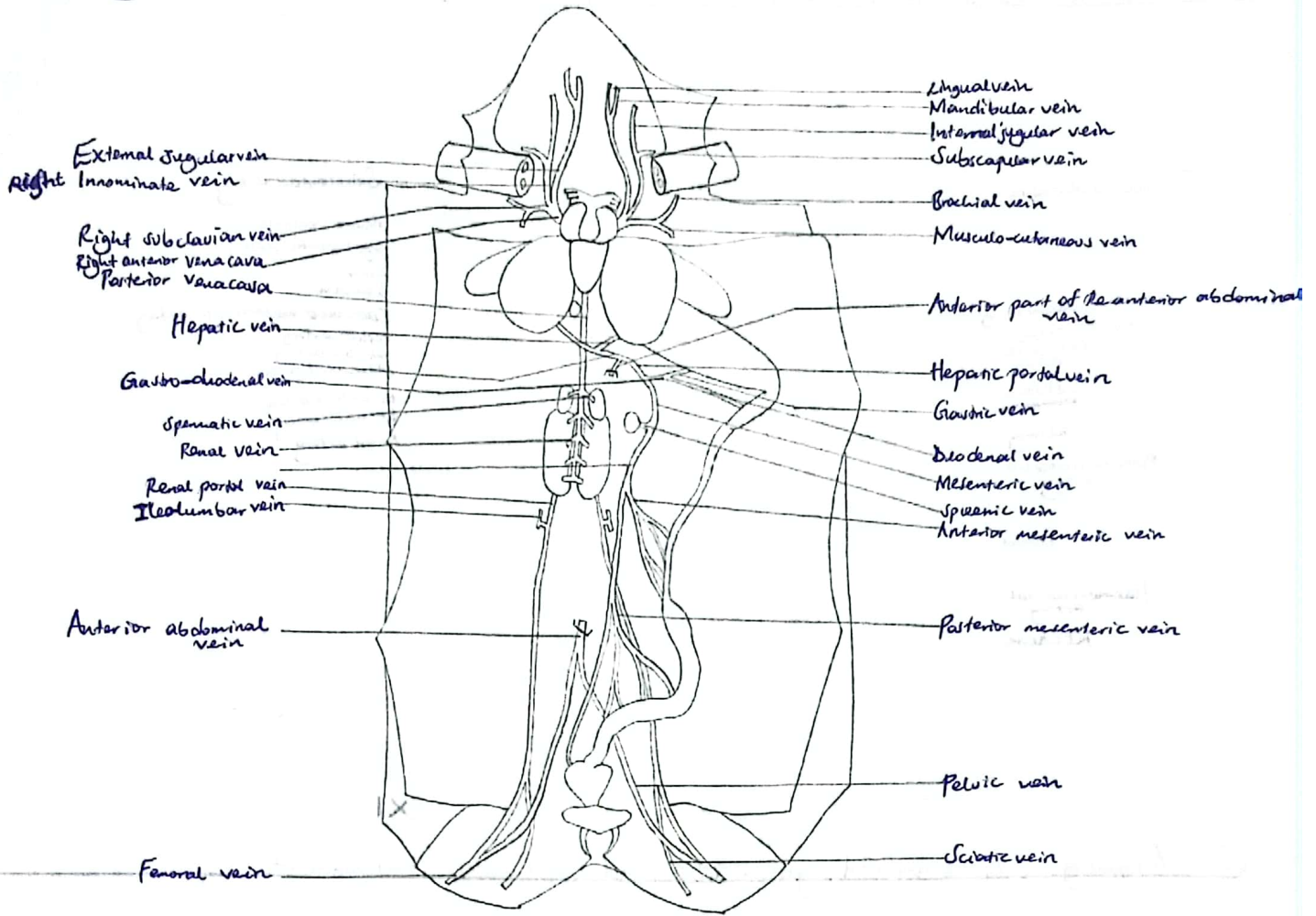
47) A drawing of the arterial system of a toad with the heart in its situ position.



X1

48

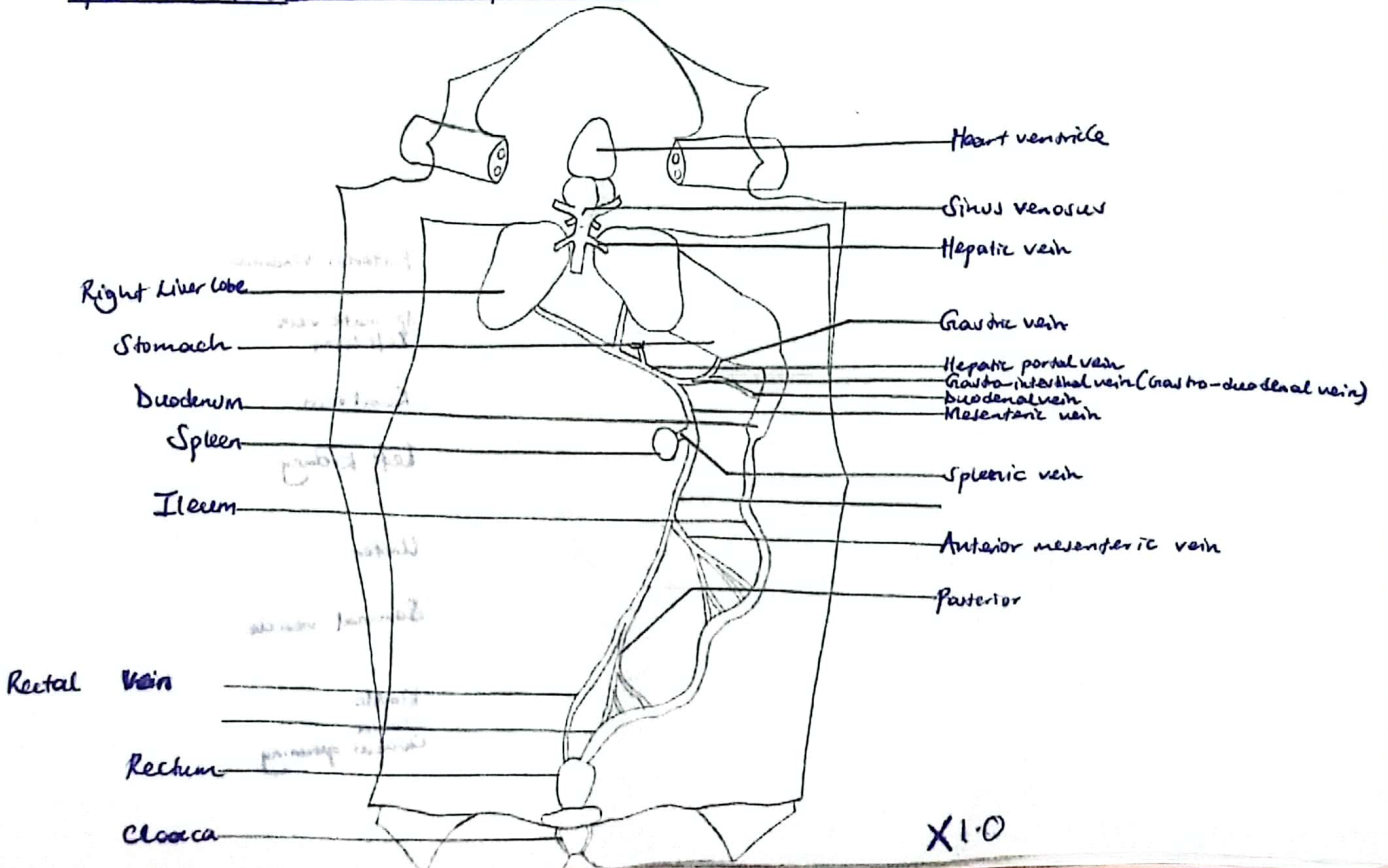
A drawing of the venous system of a toad with the heart in situ.



X1.5

49

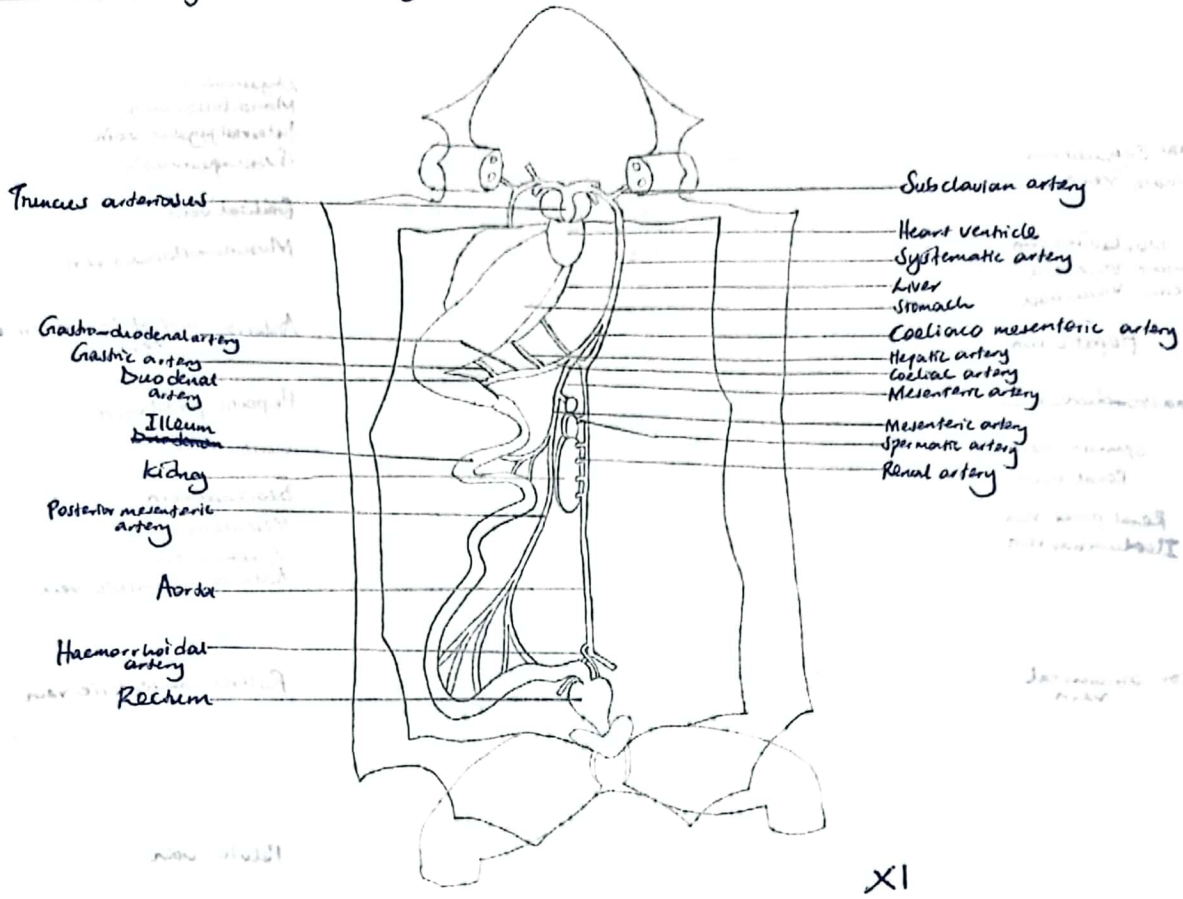
A drawing of the vessels draining alimentary canal displaced to the left and its associated organs and the spleen of the toad, and the heart displaced upwards.



X1.0

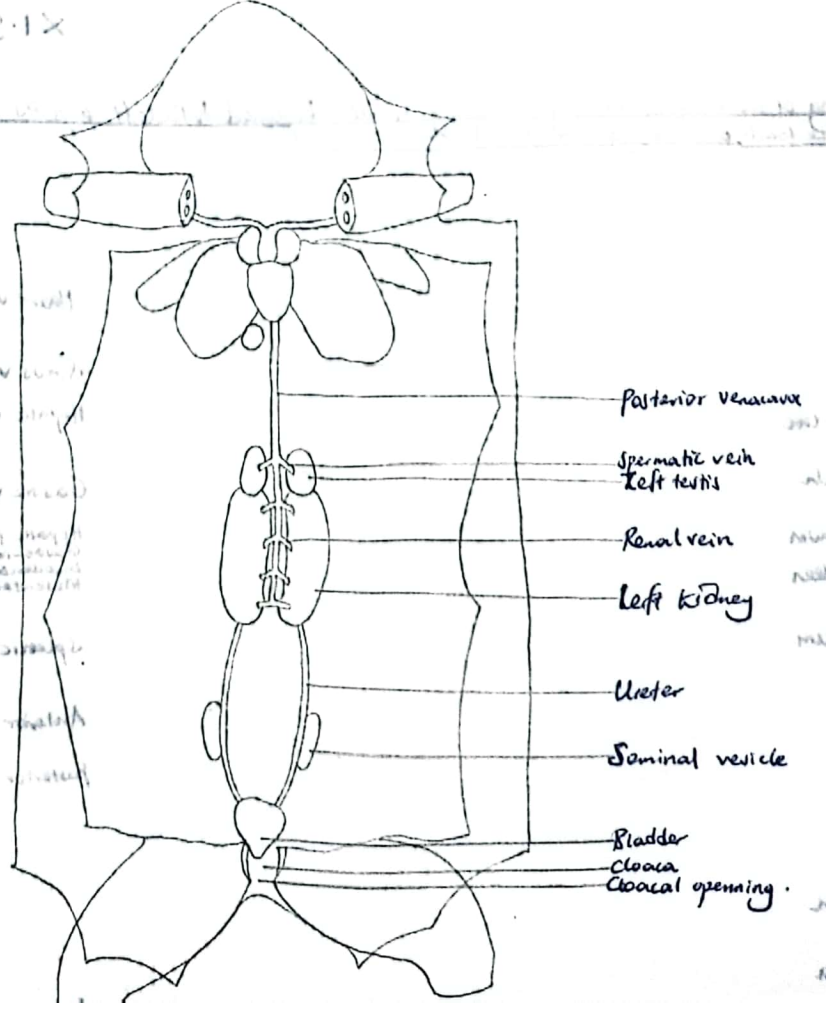
50) A drawing of the vessels supplying the alimentary canal which is displaced to the right with its associated organs and the organs in the abdominal cavity.

57



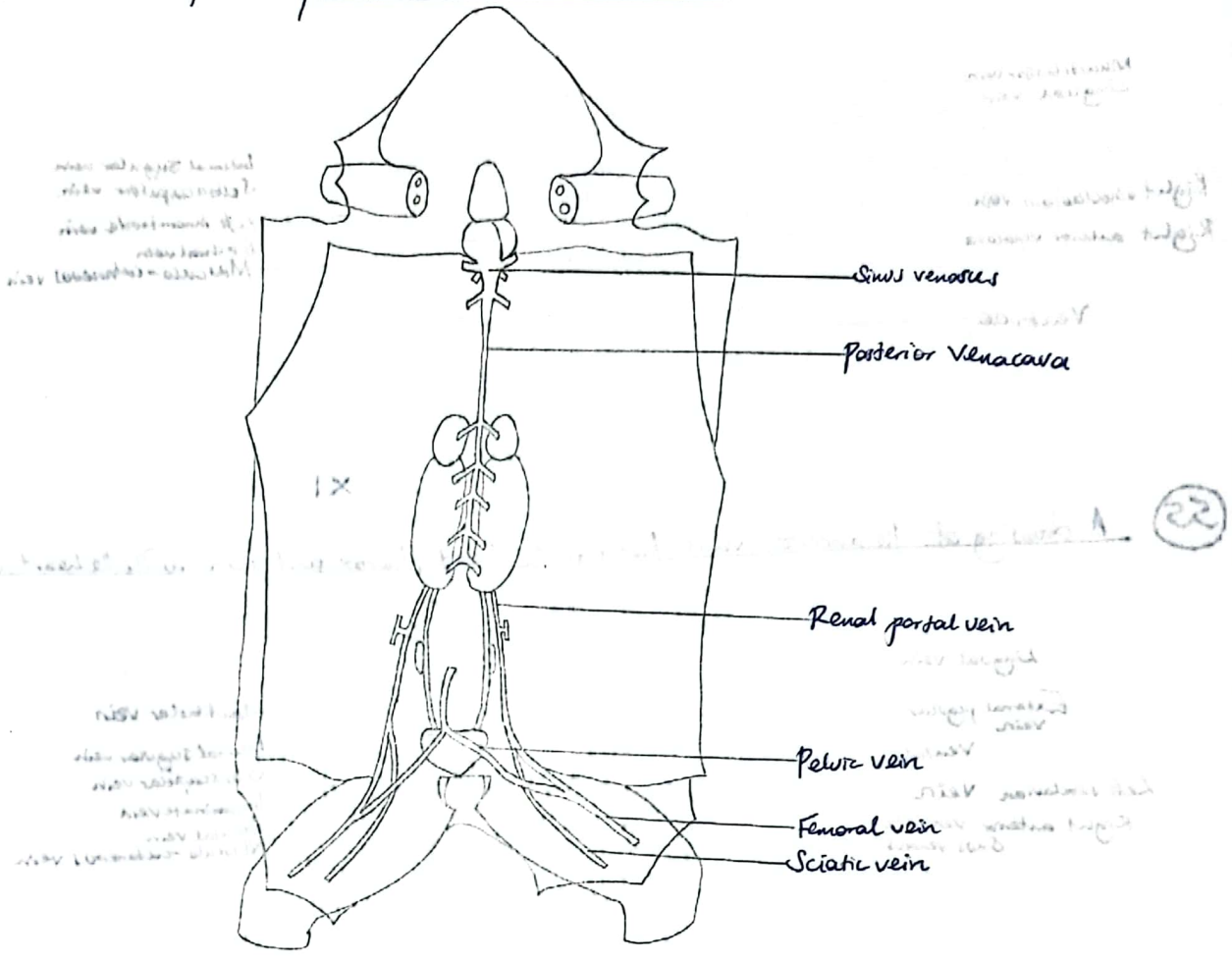
51) A drawing of the urogenital system of a toad and vessels that drain it.

2.1x

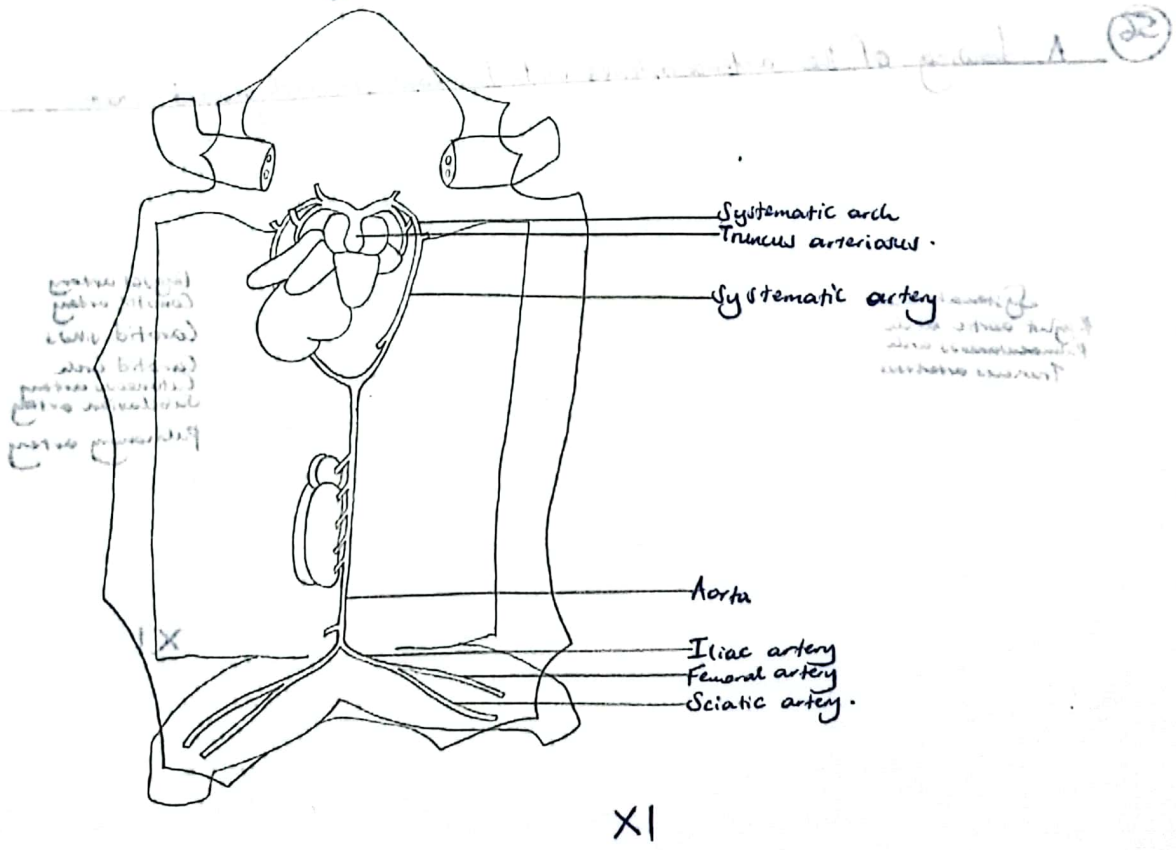


Downloaded from www.mtutoonline.com, More PASTPAPERS are available

52 A drawing of the limbs draining the limbs posterior to the head of a toad, with the heart deflected upwards.



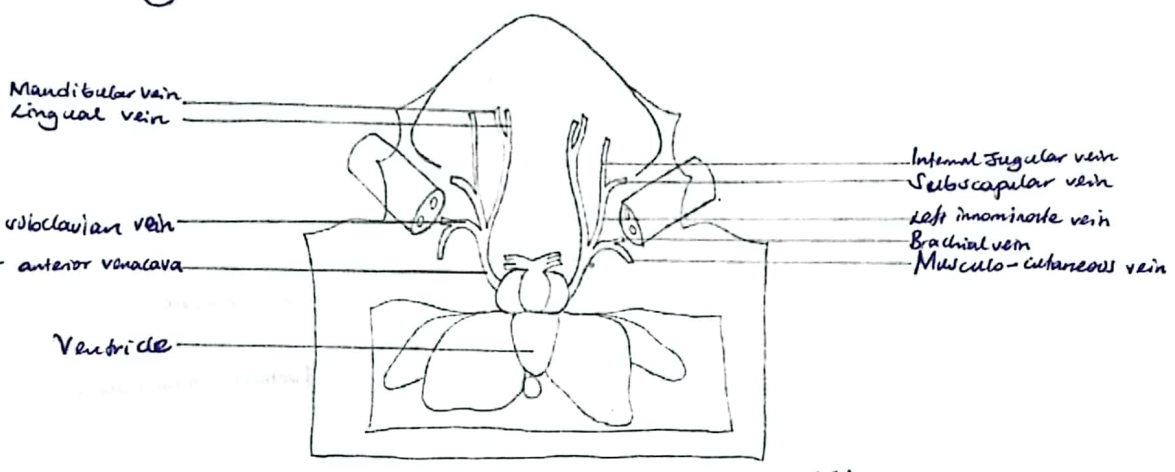
53 A drawing of the ^{vessels} ~~limbs~~ that supply the hind limbs of the toad.



54

A drawing of the anterior veins that drain the head, thorax and skin with the heart in situ

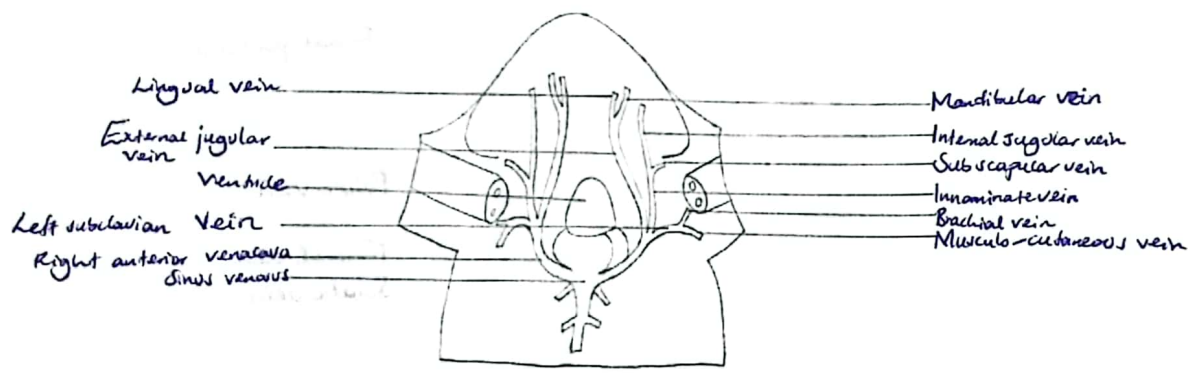
Downloaded from www.mutoonline.com, More PASTPAPERS are available



X1

55

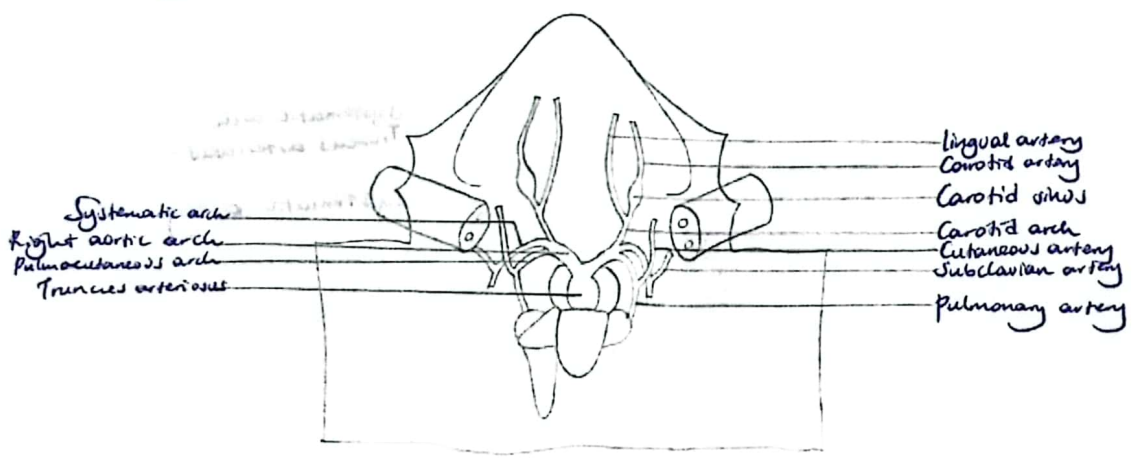
A drawing of the anterior veins that drain the head, thorax and skin with the heart displaced anteriorly



X1

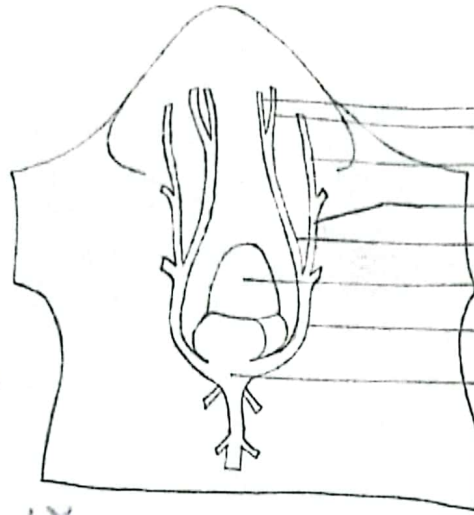
56

A drawing of the anterior arteries with the heart in undisturbed state.



X1

57 A drawing of the vessels draining the head with the heart displaced anteriorly.

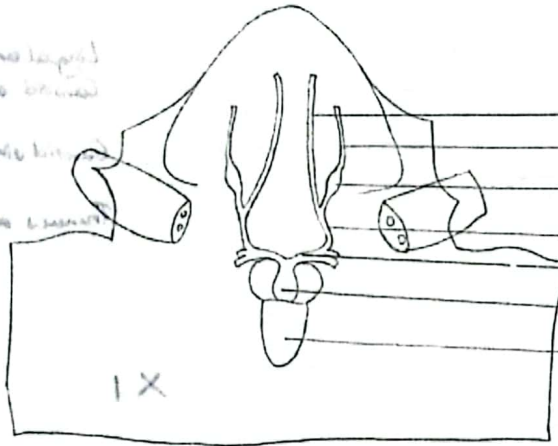


- Lingual vein
- Mandibular vein
- Mandibular vein
- Internal jugular vein
- Innominate vein
- External jugular vein
- Heart ventricle
- Anterior venacava
- Sinus venosus

IX

XI

58 A drawing of the vessels supplying the head, with the heart in situ.

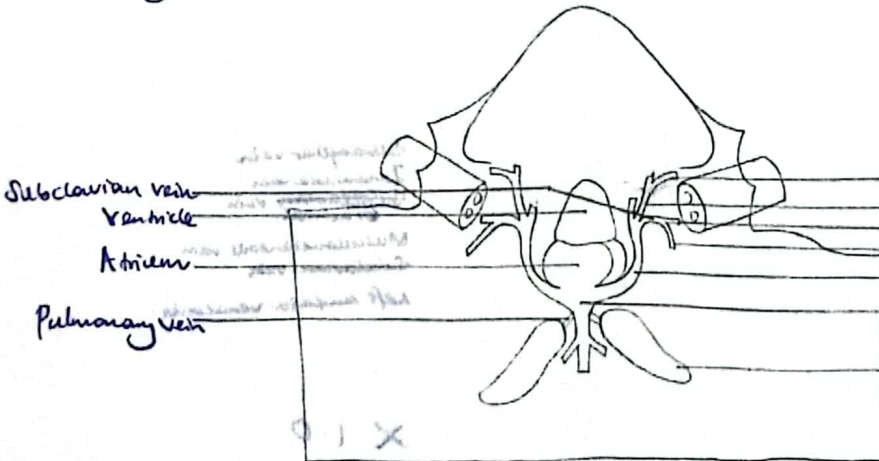


- Lingual artery
- Carotid artery
- Carotid sinus
- Carotid artery arch
- Left aortic arch
- Innominate artery
- Ventricle

IX

XI

59 A drawing of the thoracic organs and vessels draining the thorax region with the heart displaced anteriorly.



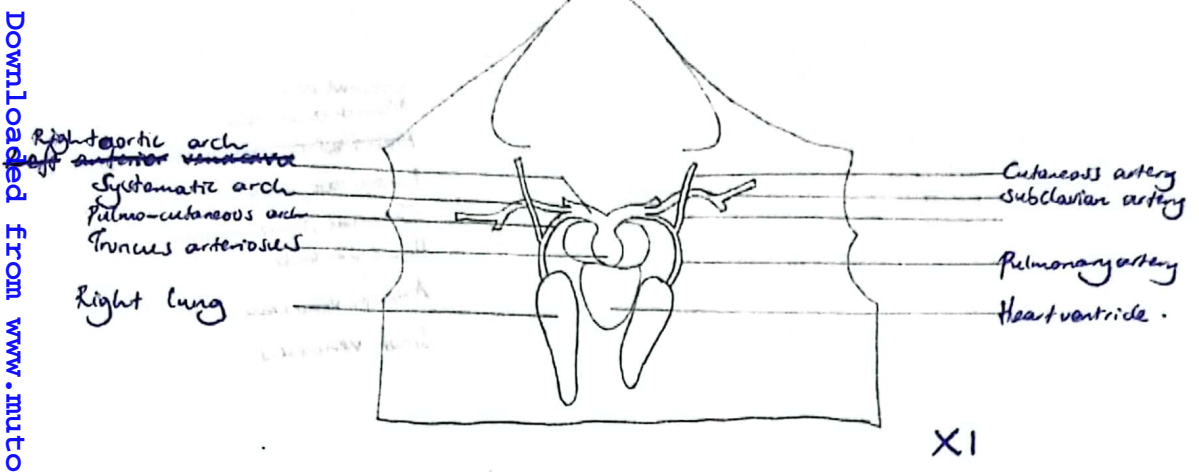
- Subclavian vein
- Ventricle
- Atrium
- Pulmonary vein

- Subscapular vein
- Innominate vein
- Subscapular vein
- Brachial vein
- Musculo-cutaneous vein
- Left anterior venacava
- Sinus venosus
- Left lung

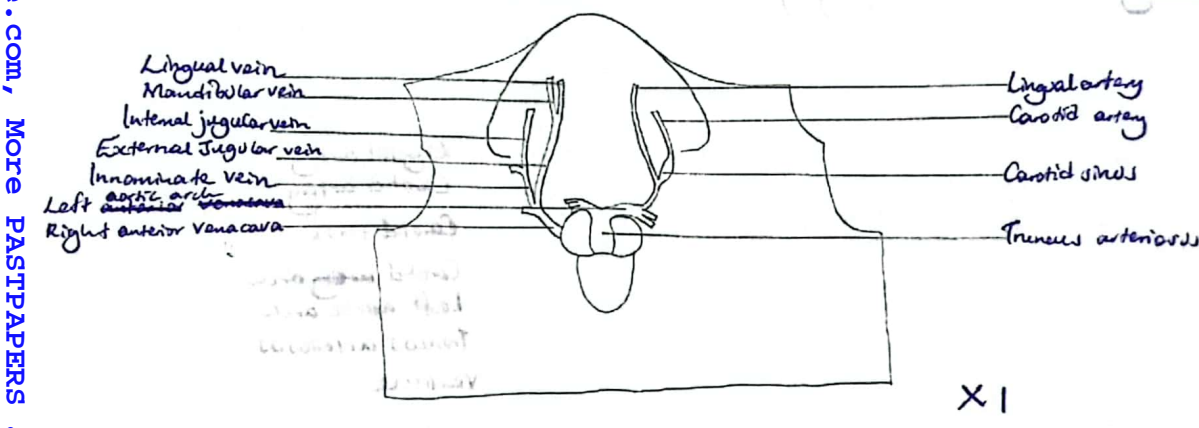
IX

XI

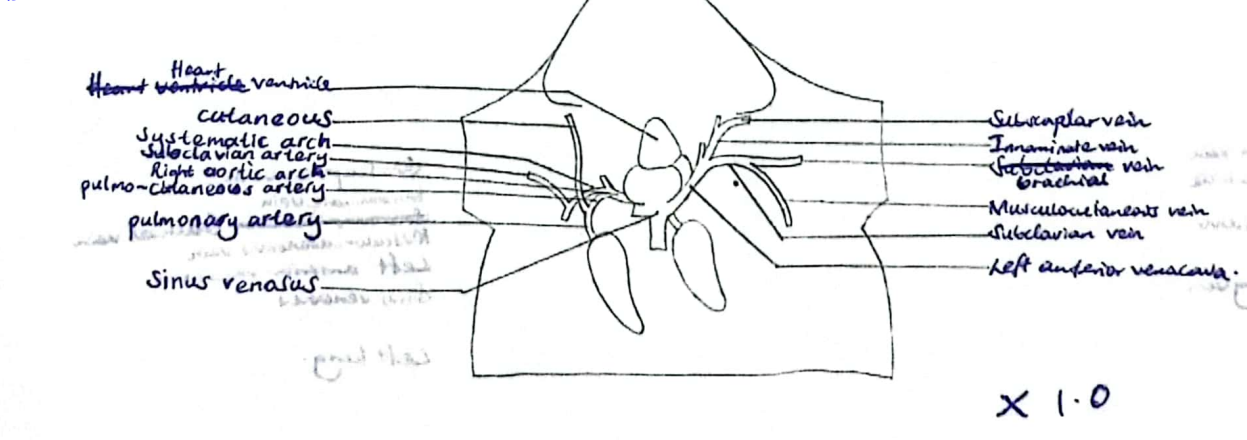
60 A drawing of the vessels thoracic organs and vessels supplying the thoracic region with the heart undisturbed.



61 A drawing of the blood vessels draining the right side and supplying the left side of the head with the heart in situ.



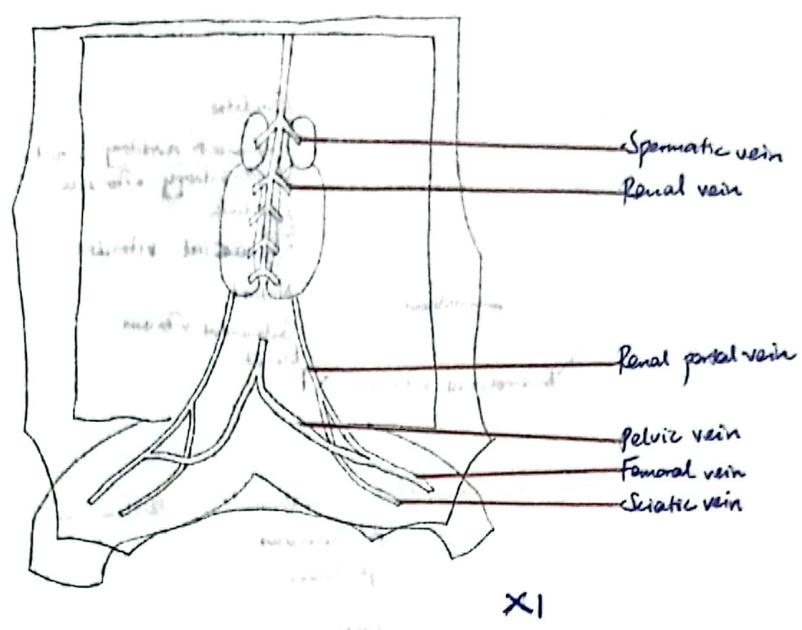
62 A drawing of the thoracic organs and blood vessels draining the left side and supplying the right side and thoracic region with the heart displaced upwards.



Downloaded from www.mutodownload.com, More PASTPAPERS are available

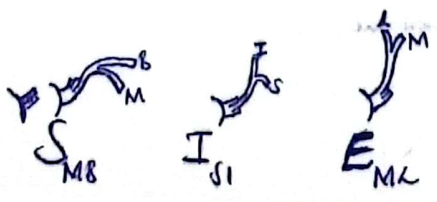
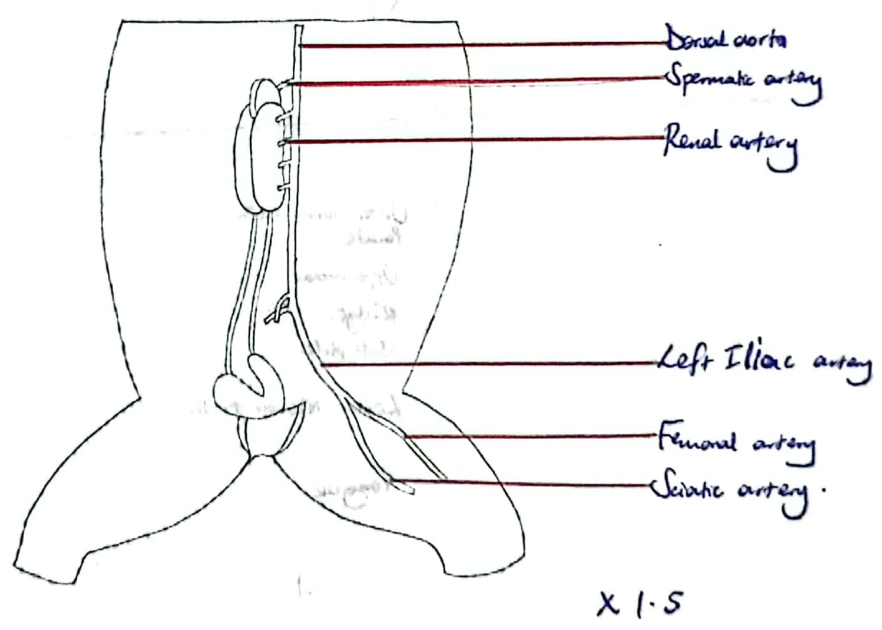
63

A drawing of blood vessels draining the hind limb and the urogenital system of a ^{male} toad.



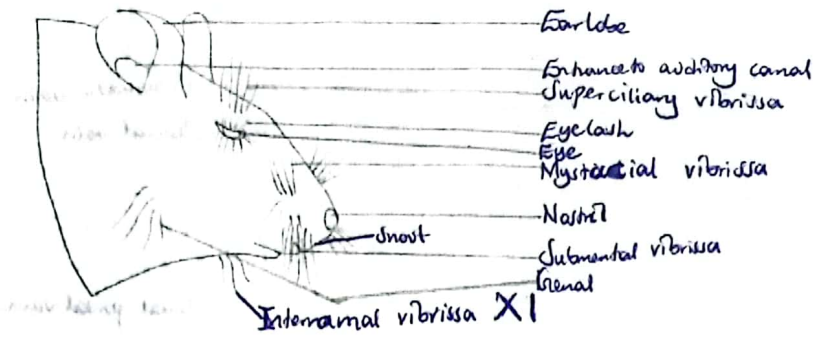
64

A drawing of the blood vessels supplying the urogenital system and the left hind limb of a toad.

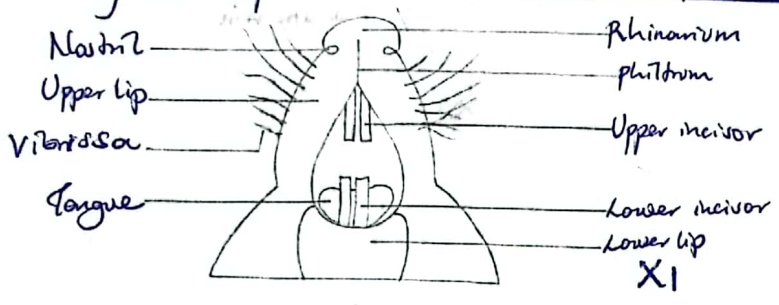


Downloaded from www.mtutoonline.com, More PASTPAPERS are available

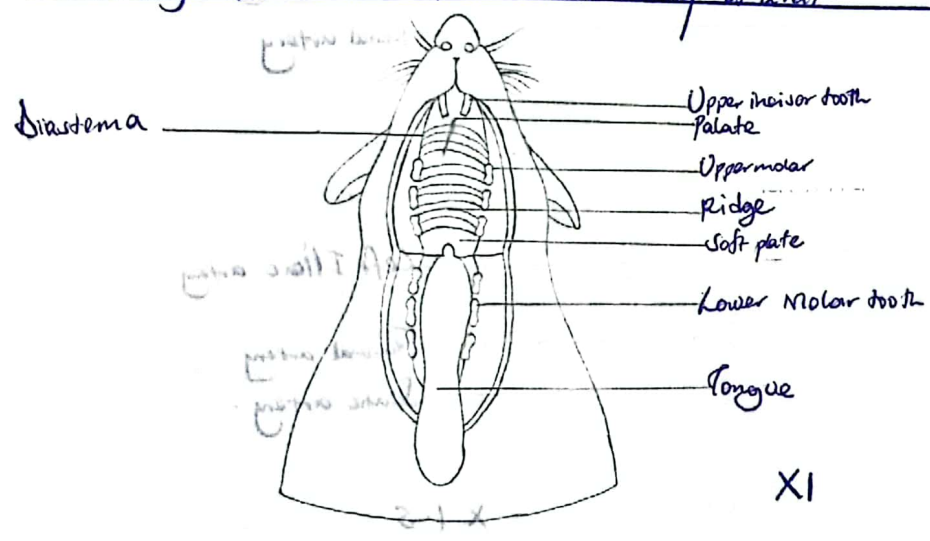
65) A drawing of the lateral view of the head of a rat.



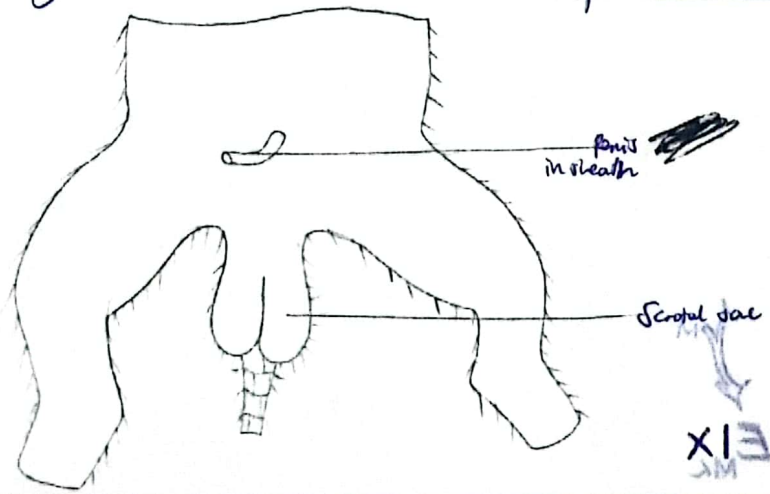
66) A drawing of the lips and other structures viewed from the ventral view of the head of a rat.



67) A drawing of the structures in the oral cavity of a rat.



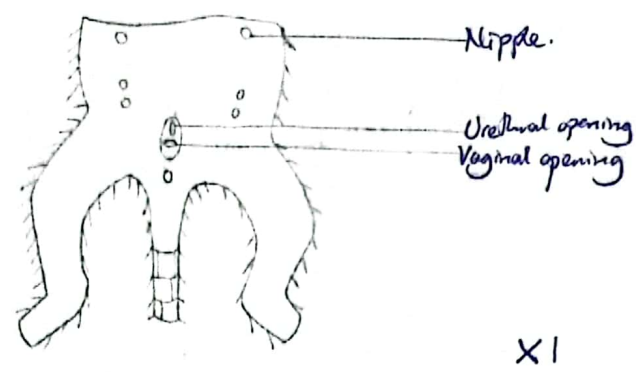
68) A drawing of the structures used in sex identification of a male rat.



Downloaded from www.mtutoonline.com, More PASTPAPERS are available

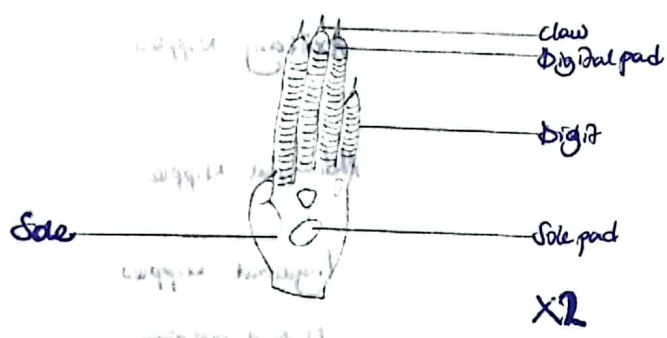
69

A drawing of the structures used in sex identification of the female rat.



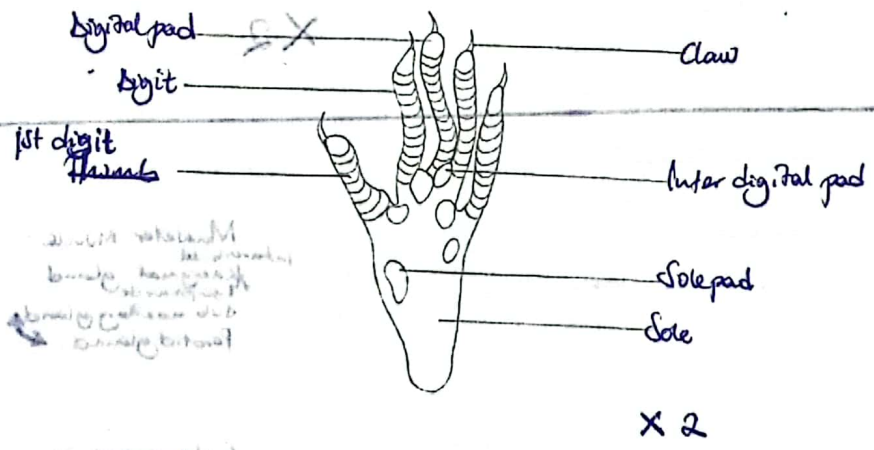
70

A drawing of the ventral view of the fore foot of a rat.



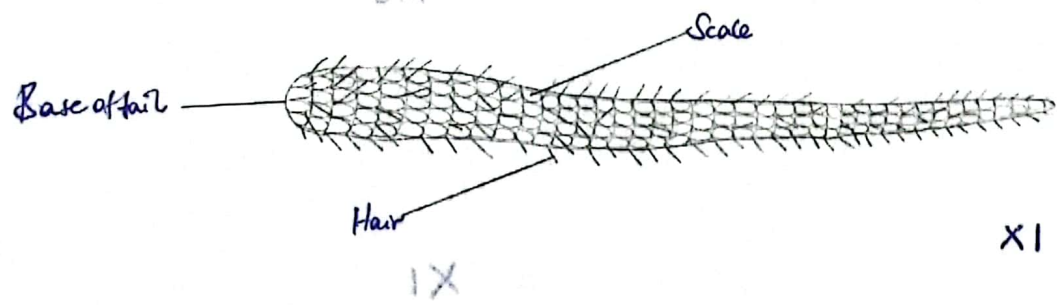
71

A drawing of the ventral view of the hind foot of a rat.



72

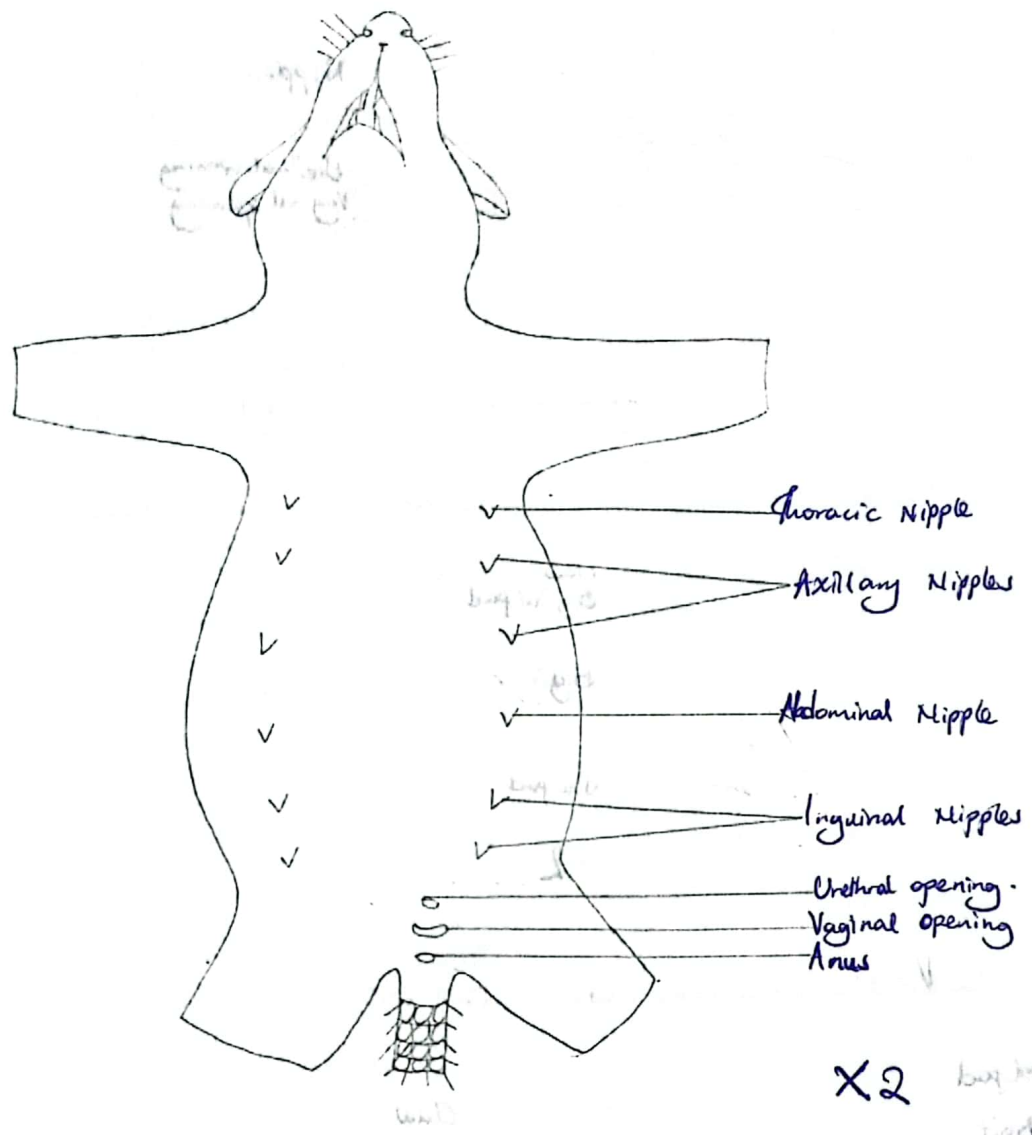
A drawing of the tail of the rat.



Downloaded from www.mtutoonline.com, More PAST PAPERS are available

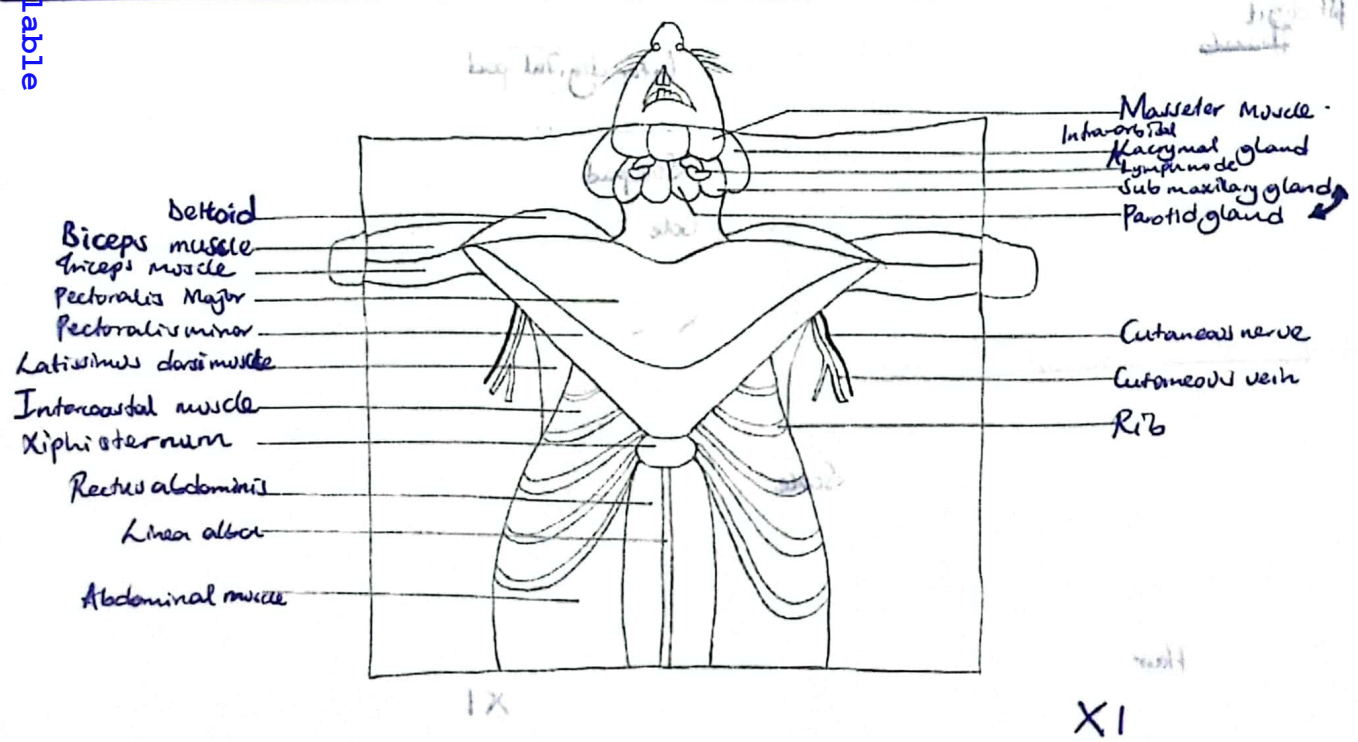
Handwritten notes on the right side of the page, including the number '71' in a circle and some illegible text.

A drawing of the visible structures on the ventral surface of a rat



X2

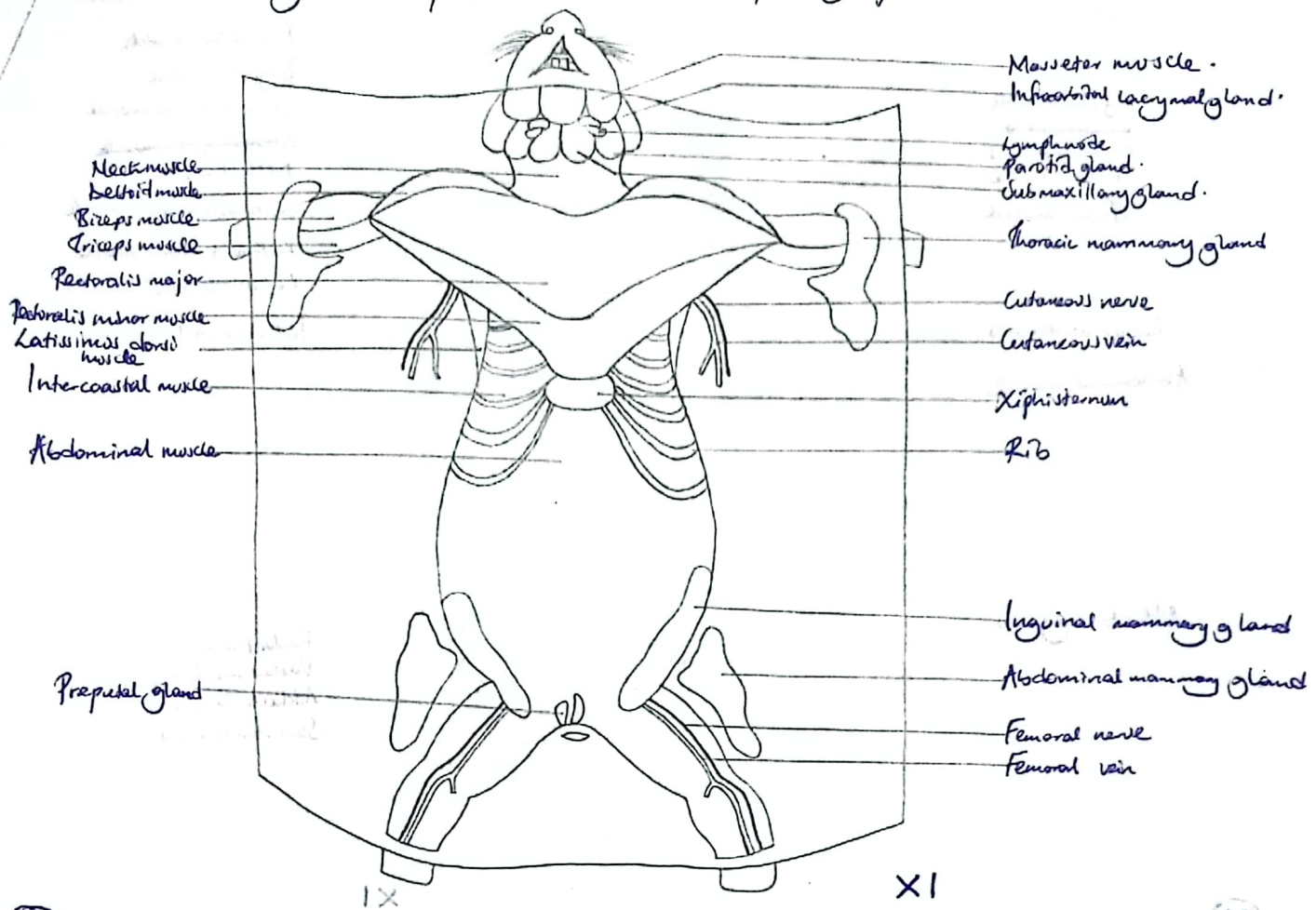
Downloaded from www.mtutoonline.com, More PASTPAPERS are available



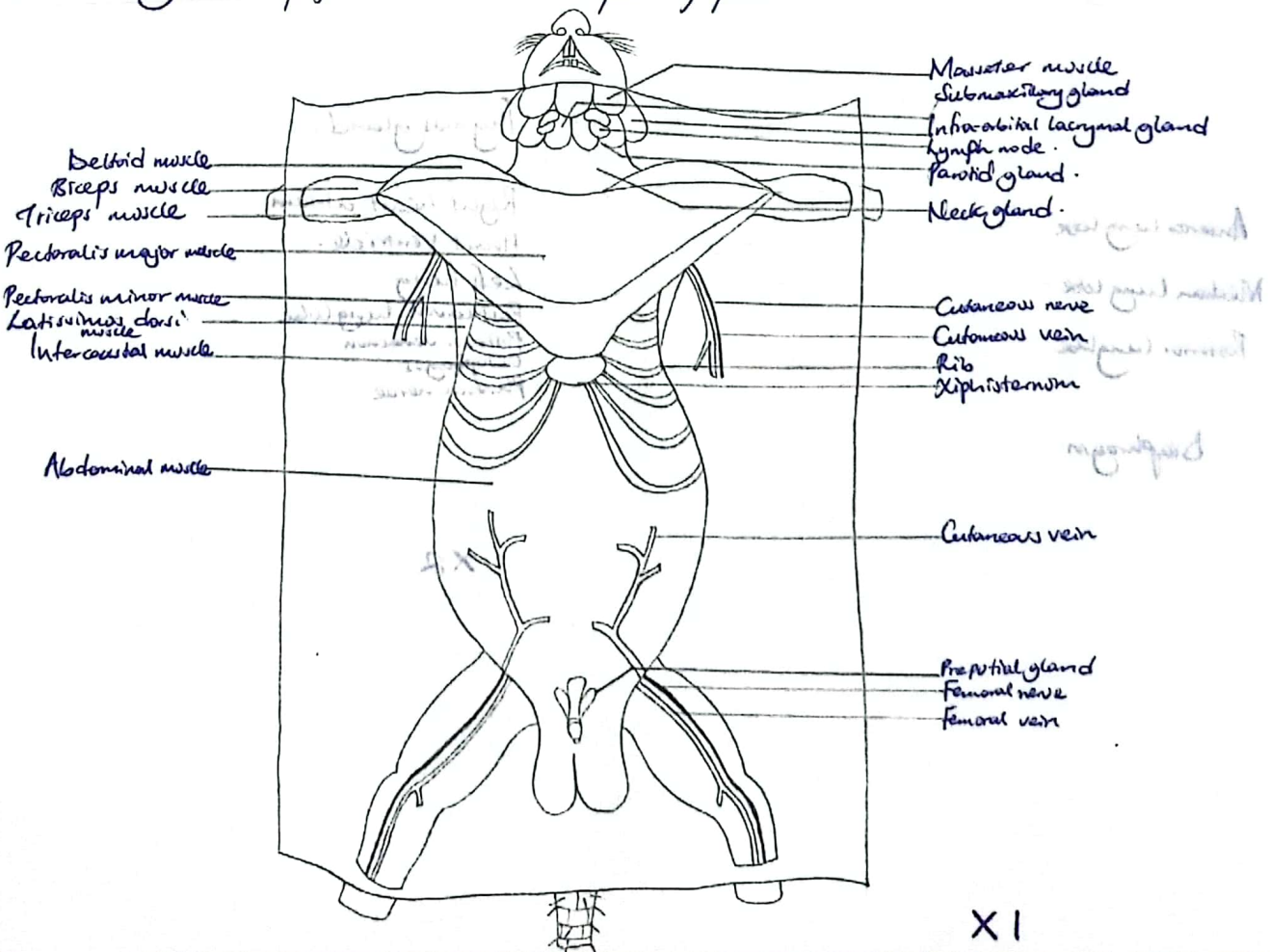
X1

75

A drawing of the superficial structures after opening up the skin of a female rat.



76 A drawing of the superficial structures after opening up the skin of a male rat.

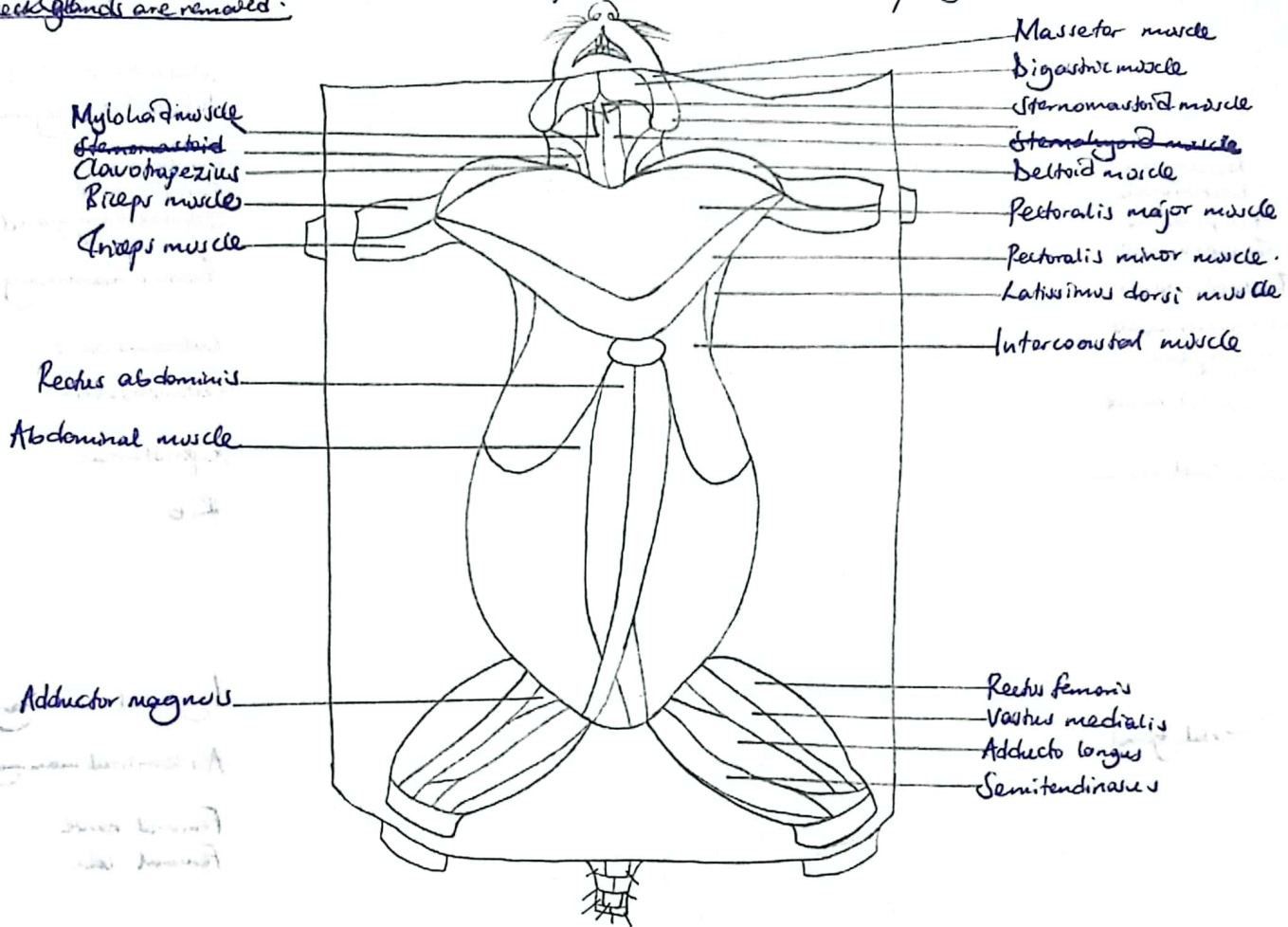


Downloaded from www.mtutoonline.com, More PASTPAPERS are available

77

79

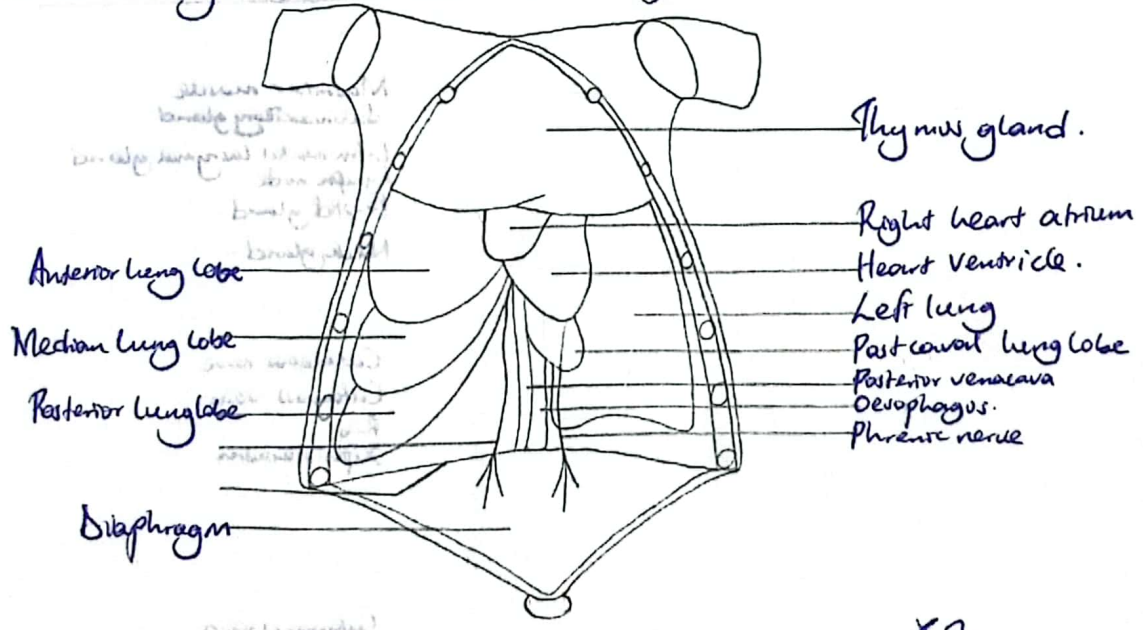
A drawing of the muscles of the ventral surface of the rat when the platysma, cutaneous muscles and neck glands are removed.



IX

XI

78 A drawing of structures in the thoracic region in situ.

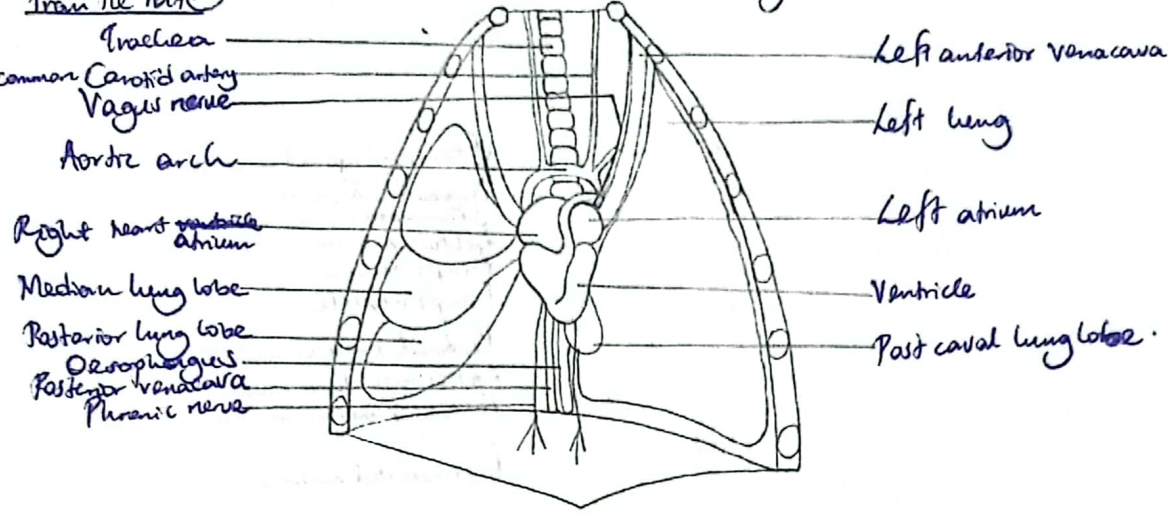


X2

Downloaded from www.mutoonline.com, More PASTPAPERS are available

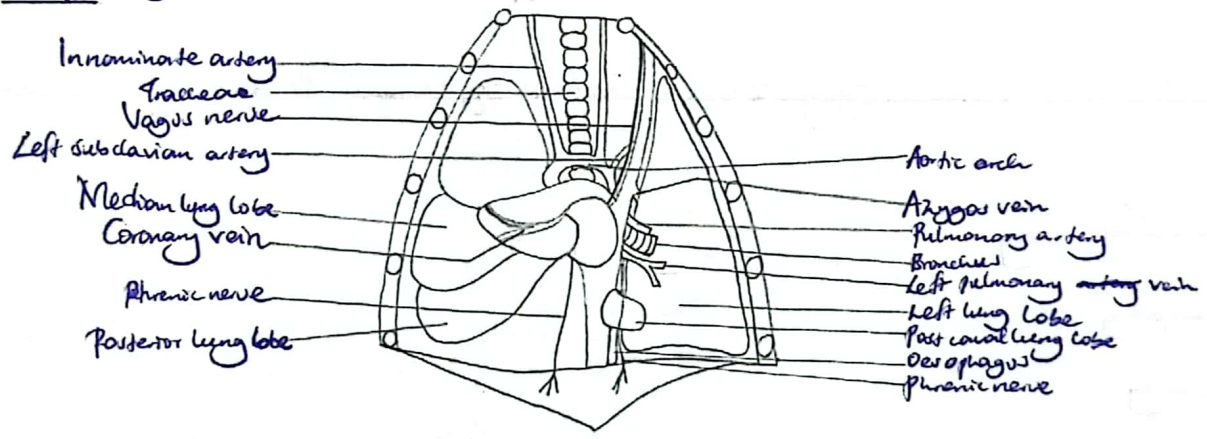
A drawing of the structures in the thoracic region when in situ with the thyroid gland removed from the neck

Downloaded from www.mtcoolink.com, More PASTPAPERS are available



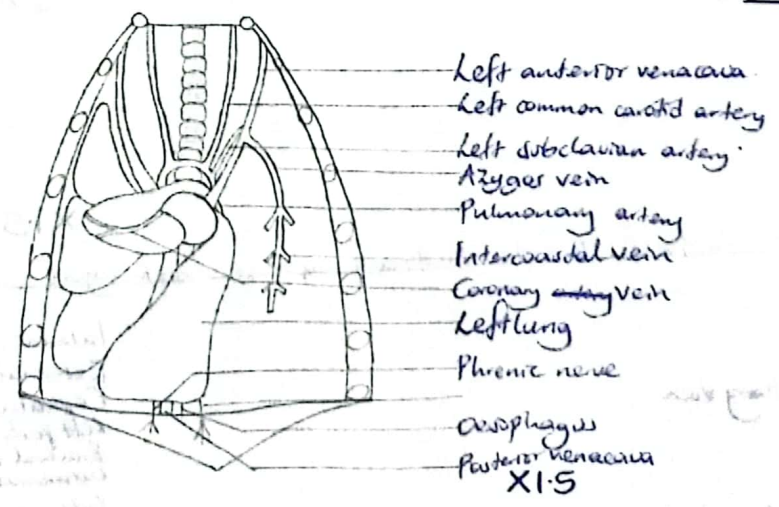
X1.5

A drawing of the structures exposed in the thoracic cavity with the heart displaced and pinned to the right of the rat.



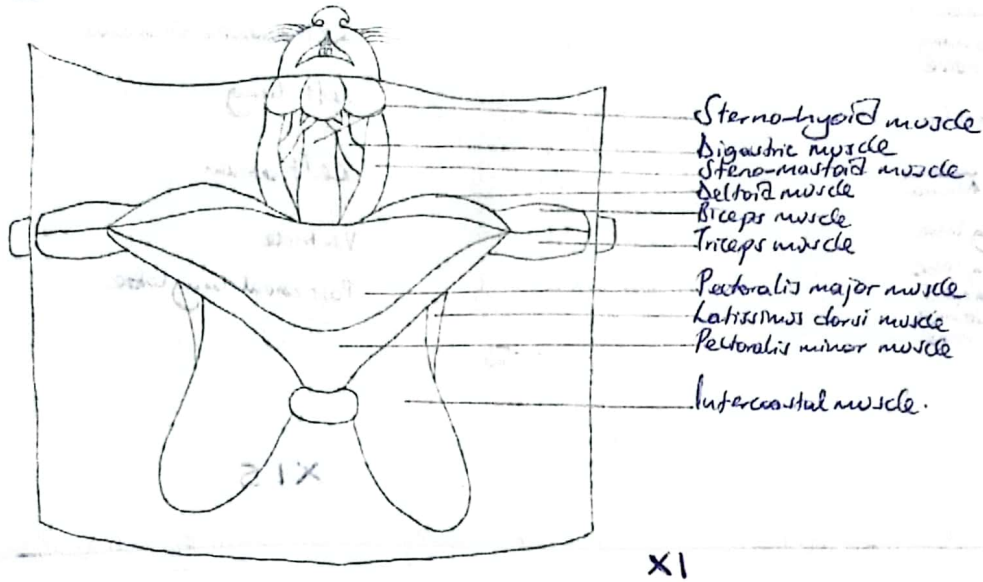
X1.5

A drawing of the structures in the thoracic cavity with the heart and the left lung lobe displaced to the right of the rat.

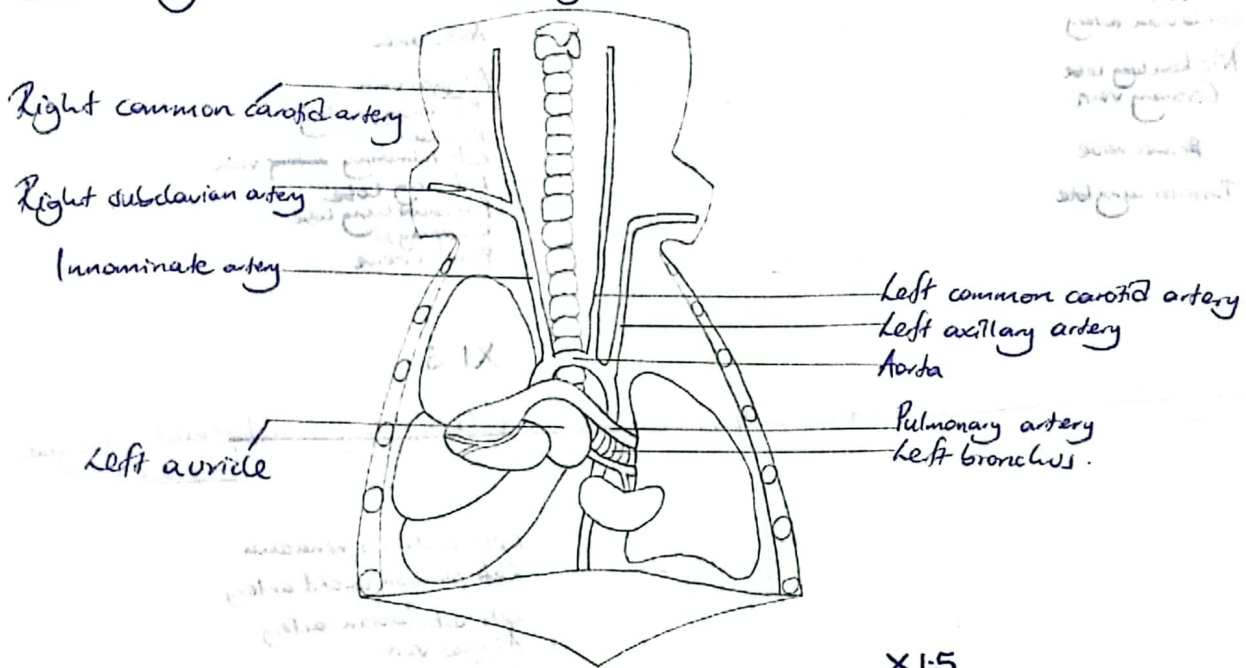


X1.5

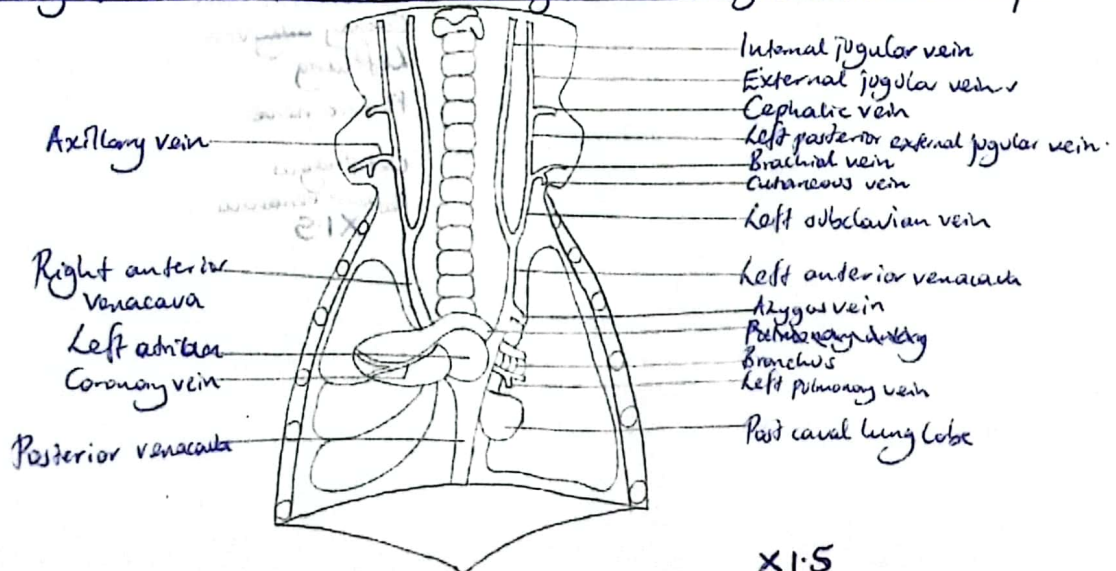
82) A drawing of the muscles of the neck and thoracic region with the neck glands removed from the rat.



83) A drawing of the blood vessels supplying the thoracic and neck region with the heart displaced to the right.

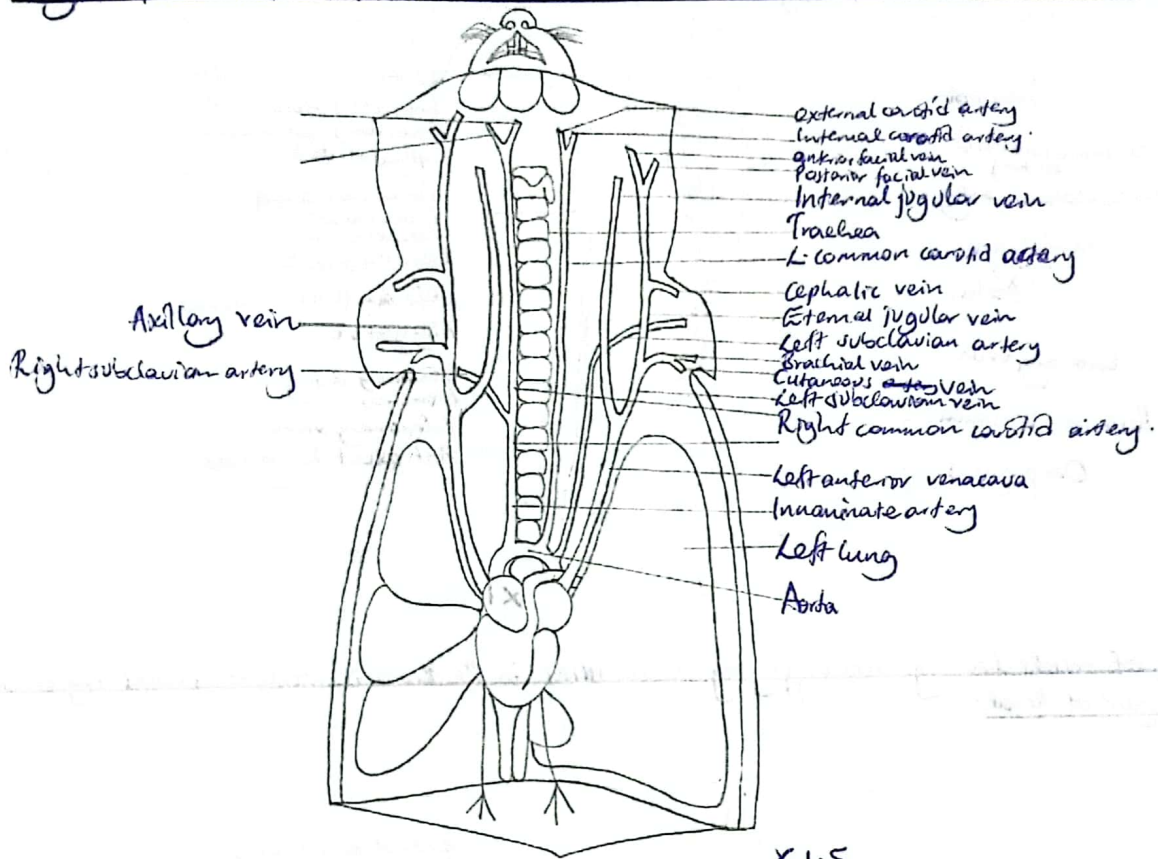


84) A drawing of blood vessels that drain the thoracic region and neck region with the heart displaced to the right.



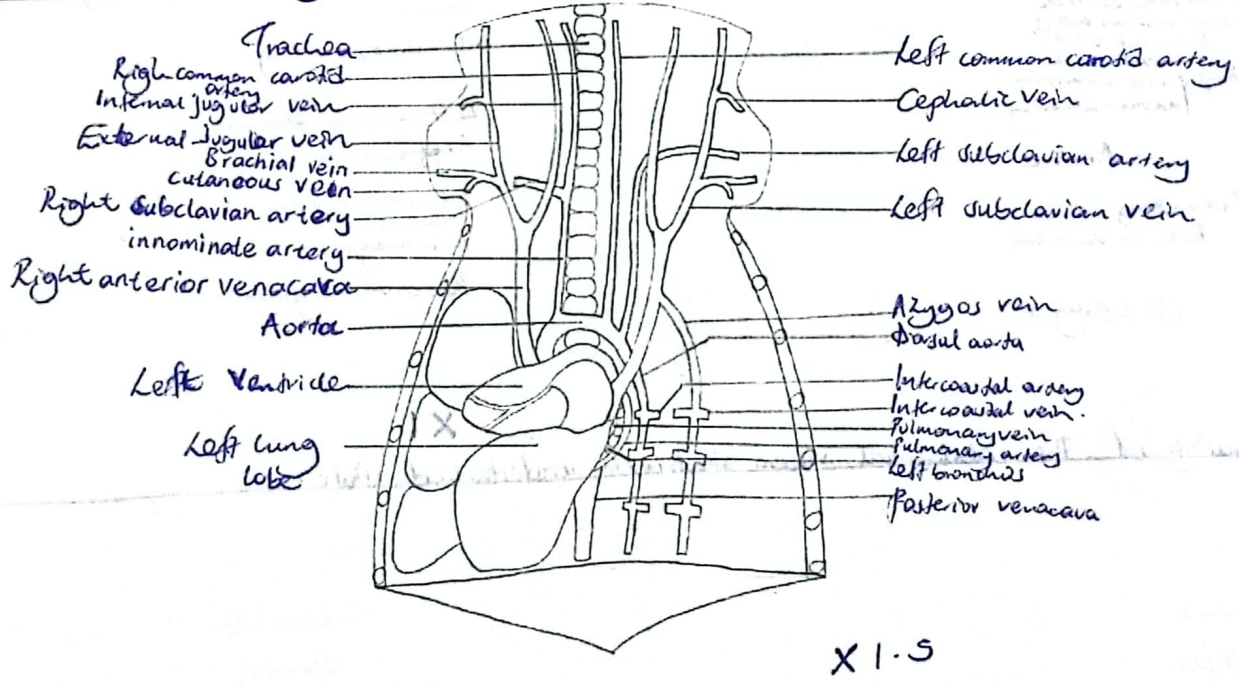
85

A drawing of the blood circulation in the thoracic region, ^{head region,} and neck region, and the exposed organs, with the heart in situ.



86

A drawing of the circulation and respiratory systems within the thoracic and lower neck regions of the rat with the heart and left lung depicted on the right of the specimen and the thyroid gland removed.

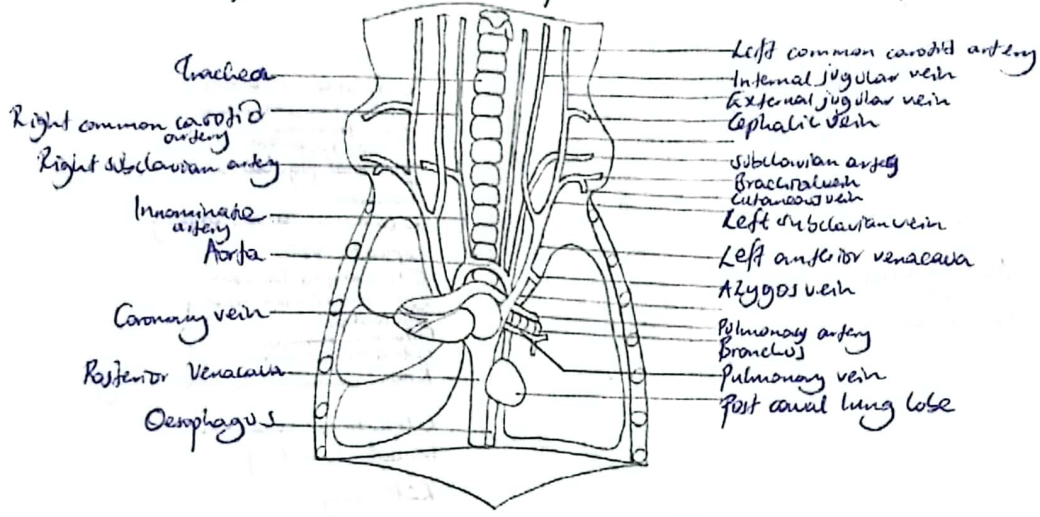


87

A drawing of the blood circulation in the thoracic region, and neck region with the organs exposed and the heart displaced to the right of the specimen:

90

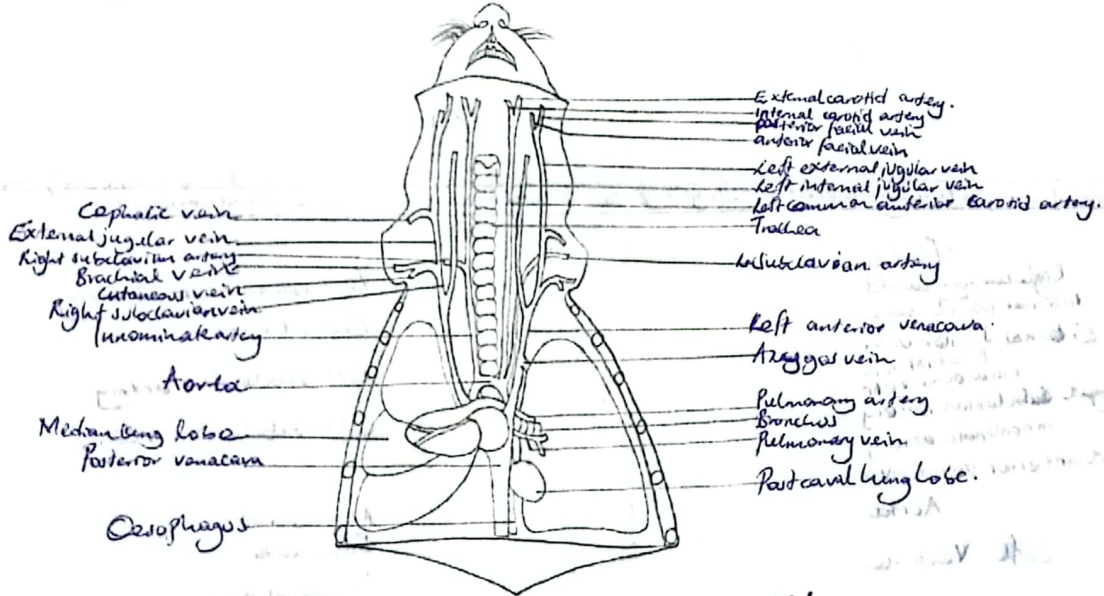
2008



x1

88

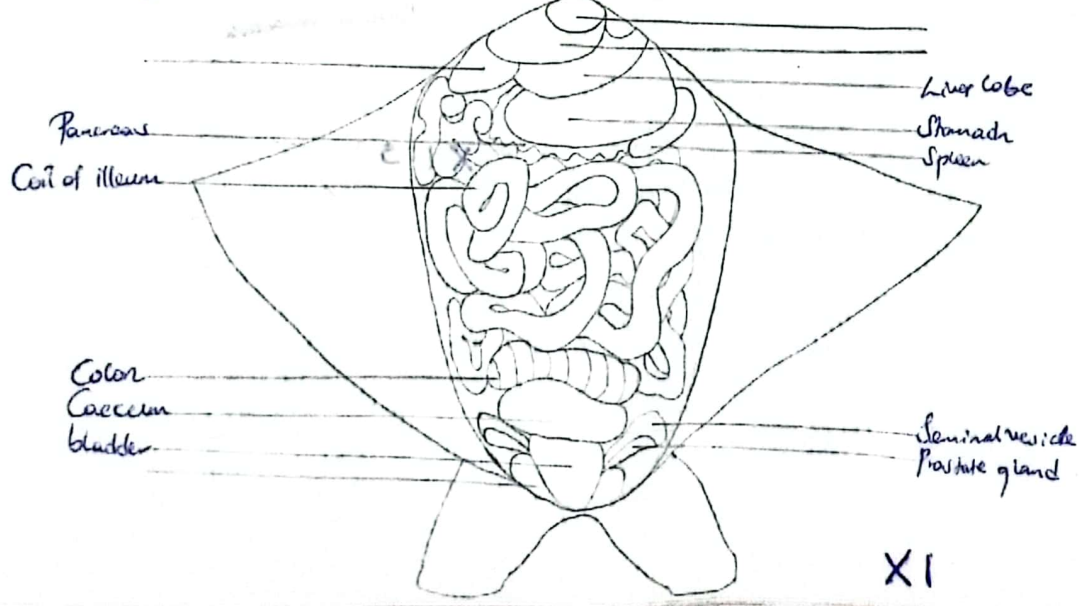
A drawing of vessels draining and supplying the structures in the thoracic, neck and head region with the heart deflected to the right of head:



x1

89

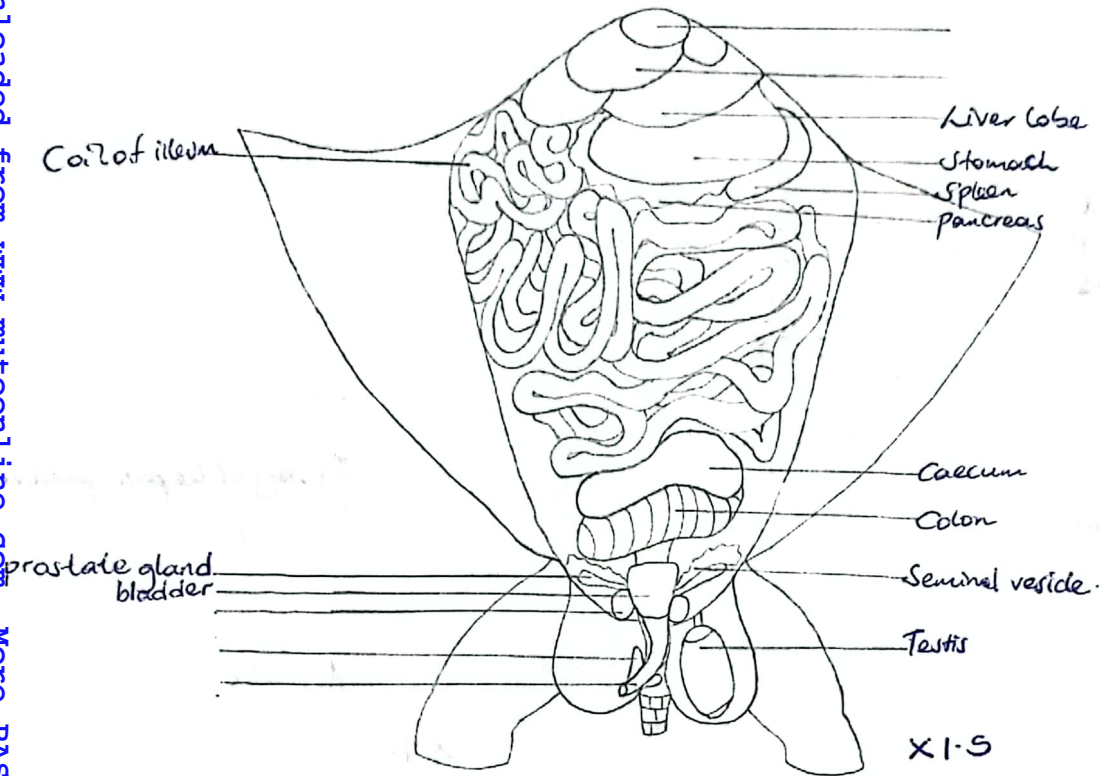
A drawing of the abdominal viscera structure undisturbed state:



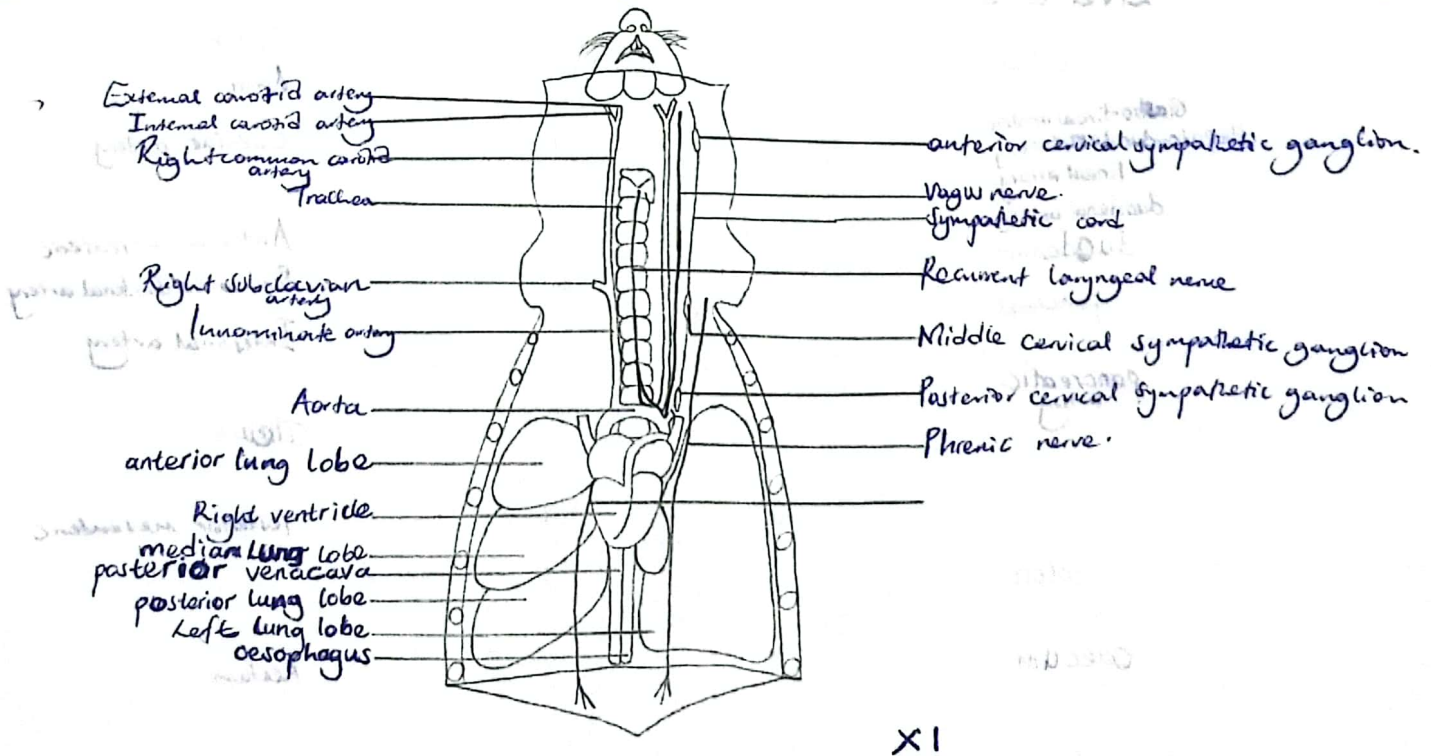
x1

Downloaded from www.mtutoonline.com, More PASTPAPERS are available

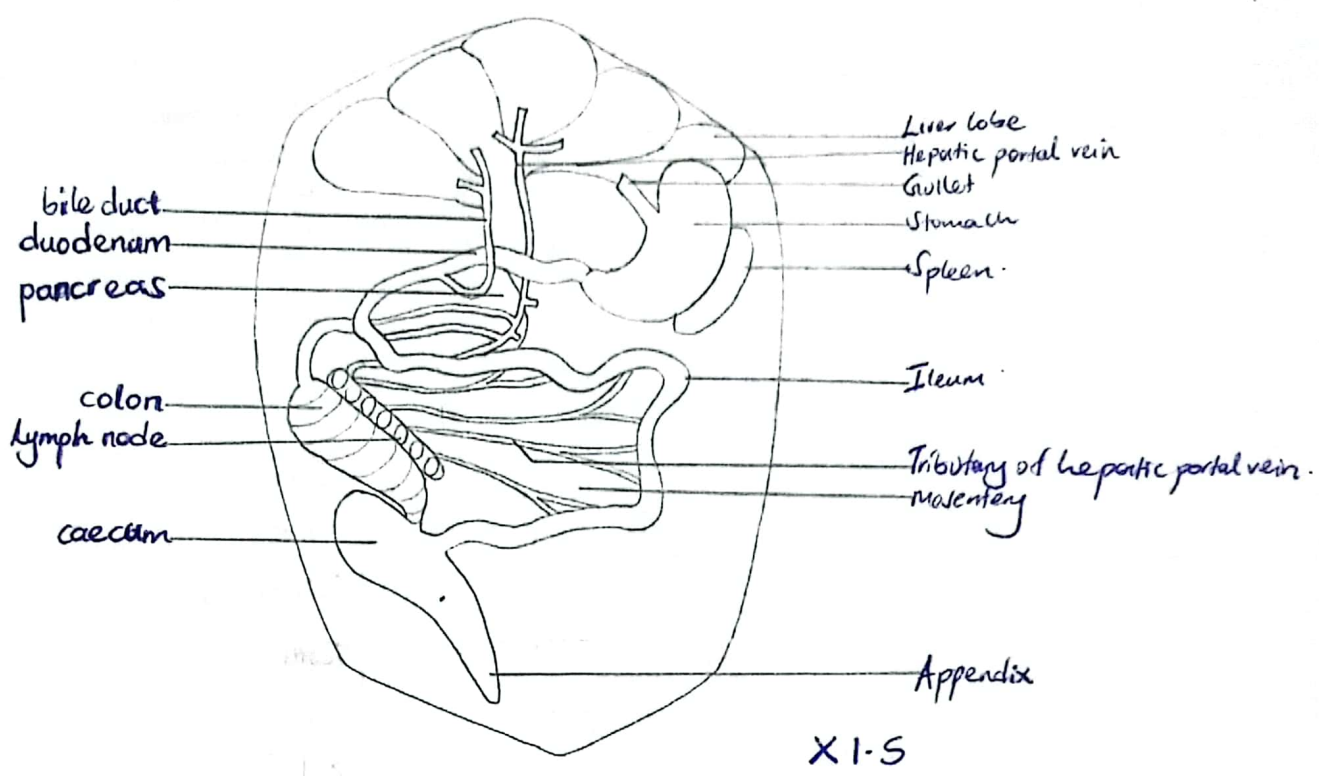
90 A drawing of the structures lying posterior to the diaphragm without displacing any organs of the rest.



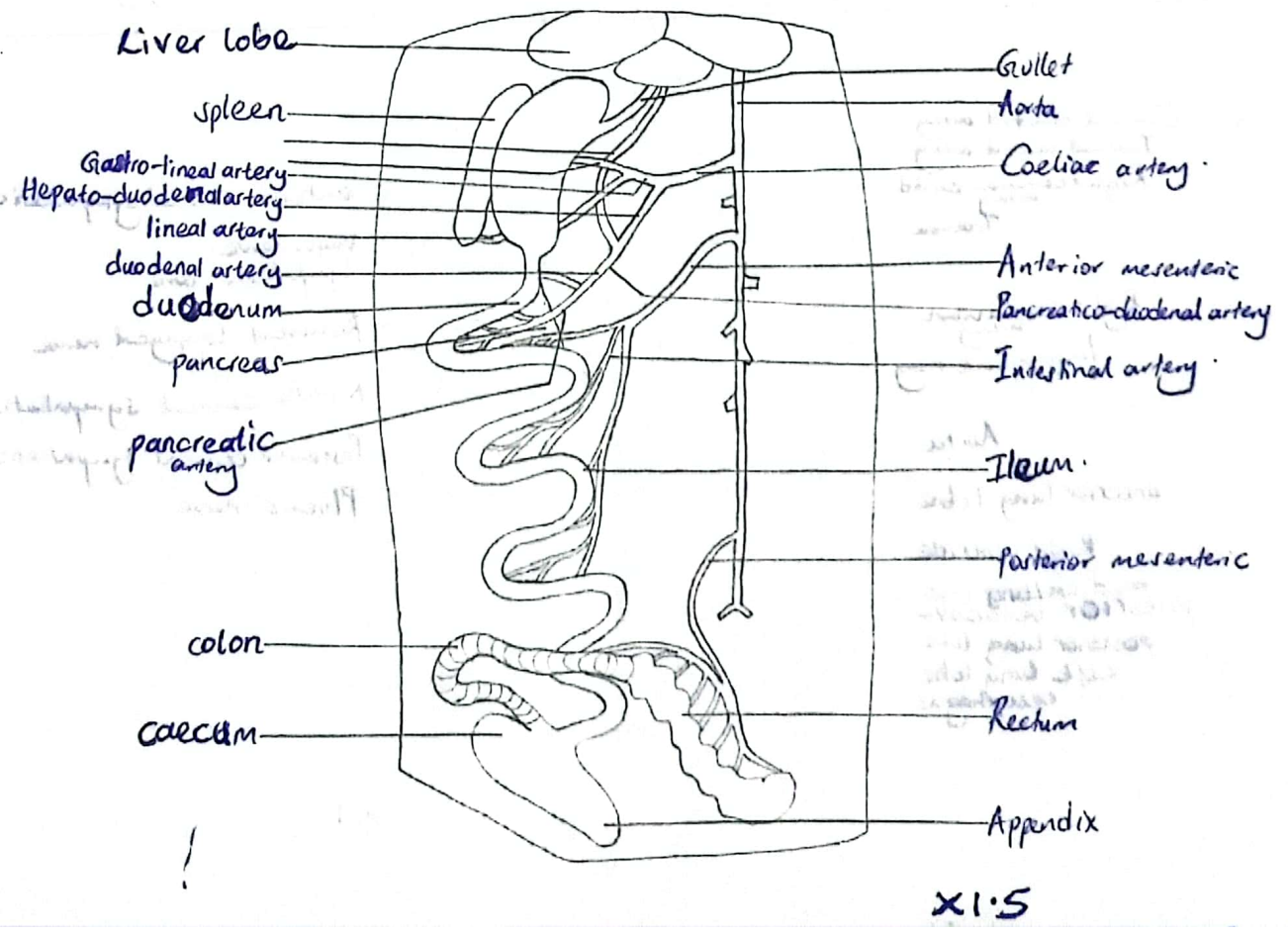
91 A drawing of the nerves of the neck on the left side and blood vessels supplying the head, chest region and visible structures in the thoracic region of a rat in situ.



92 A drawing of the structures in the abdominal region, the alimentary canal and associated organs with the duodenum loop displaced to its right and ileum displaced to its left without destroying the mesenteries.



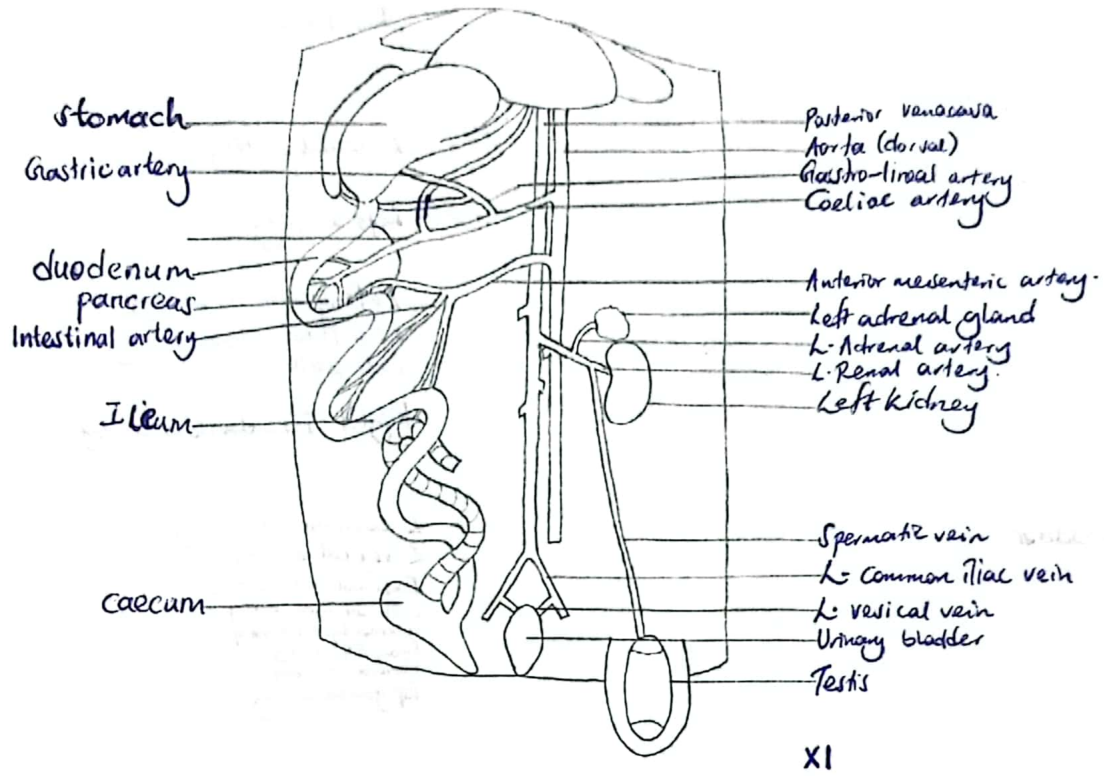
93 A drawing of bloodvessels supplying the alimentary canal and associated organs of a rat.



Downloaded from www.mtutoonline.com, More PAST PAPERS are available

94

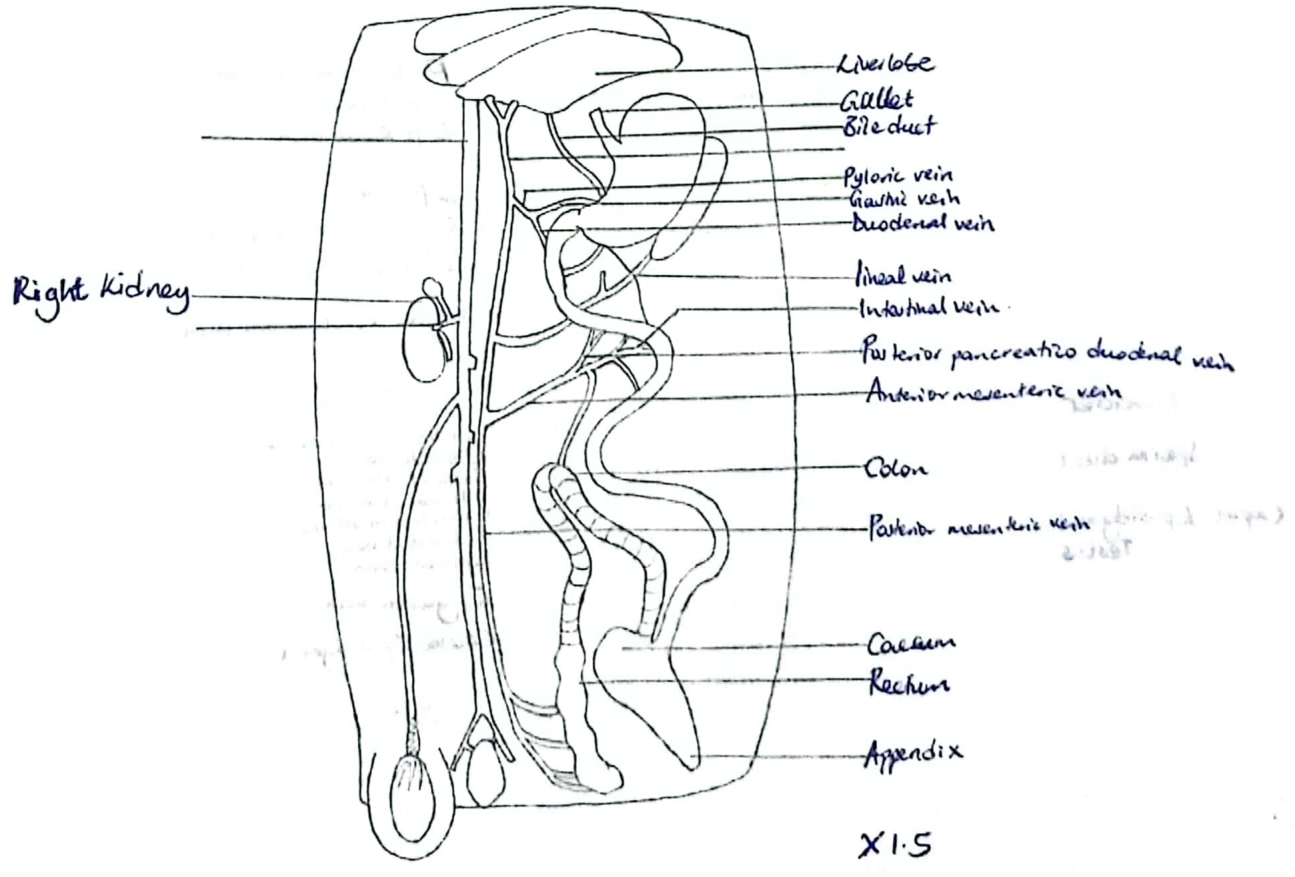
A drawing of blood vessels that carry blood to structures responsible for chemical digestion and secretion on the left side of the rat back to the heart.



XI

95

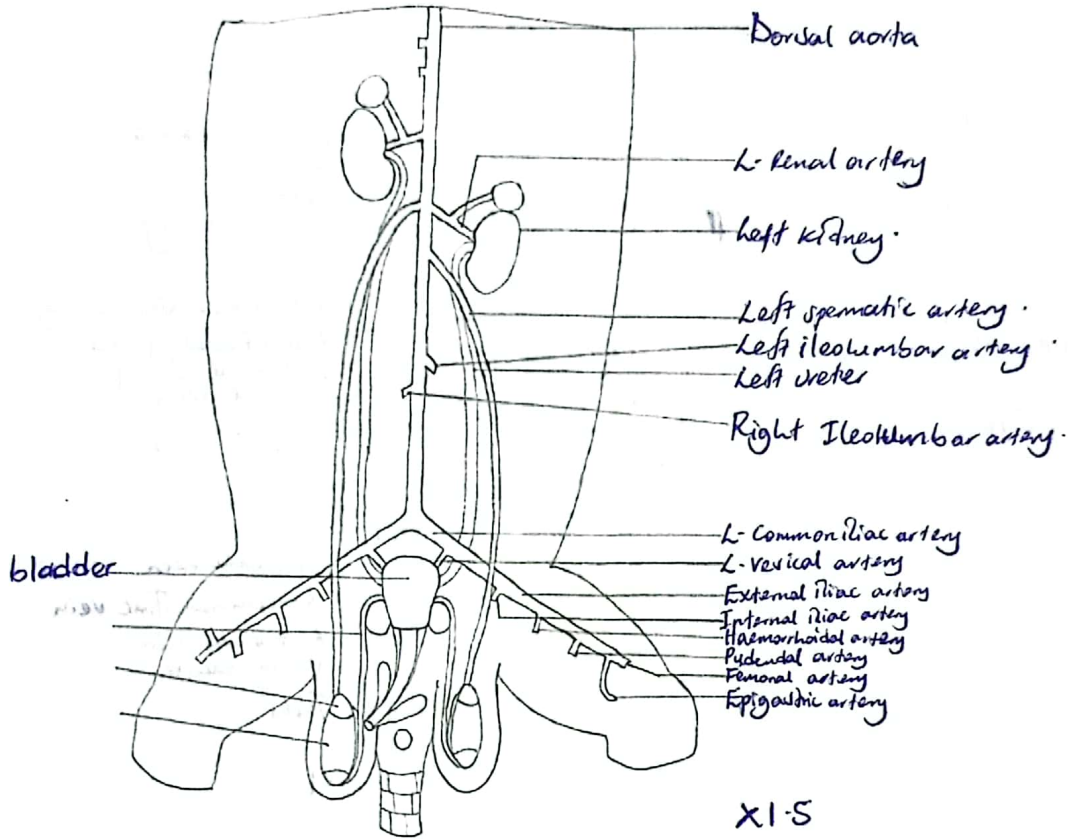
A drawing of blood vessels draining the digestive system and organs in the abdominal region of a rat.



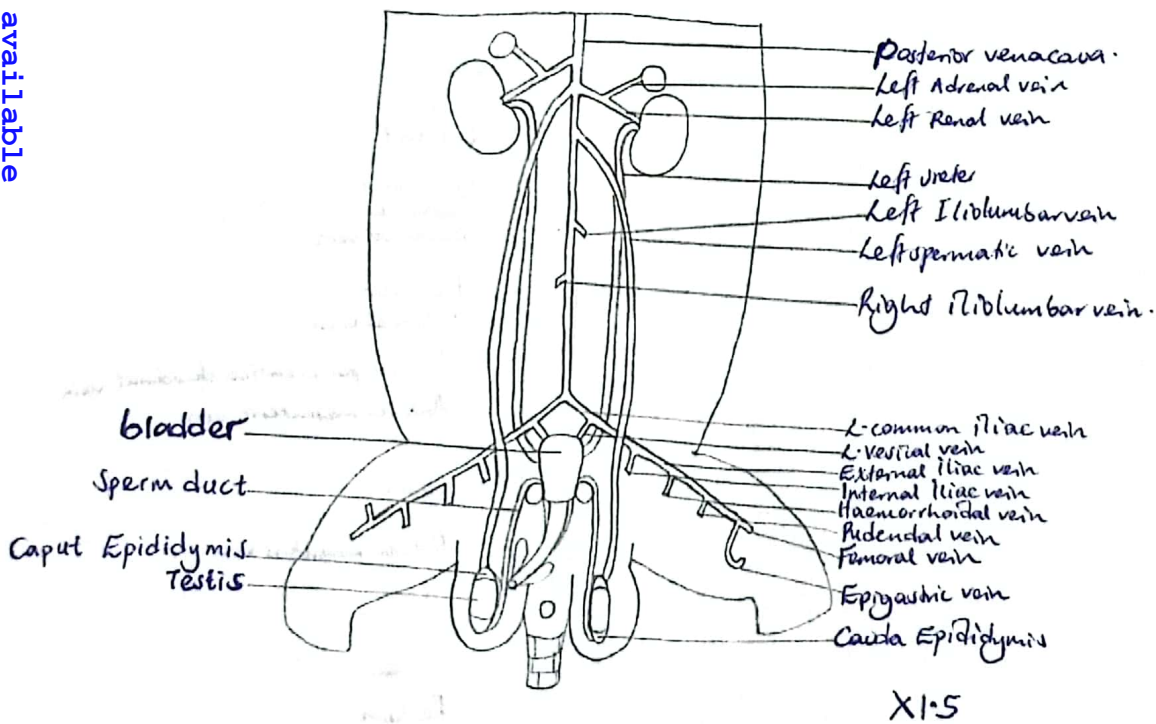
XI.5

Downloaded from www.nutoonline.com, More PAST PAPERS are available

96 A drawing of the blood vessels that supply the urogenital system and left limb of a male rat with the alimentary canal removed.

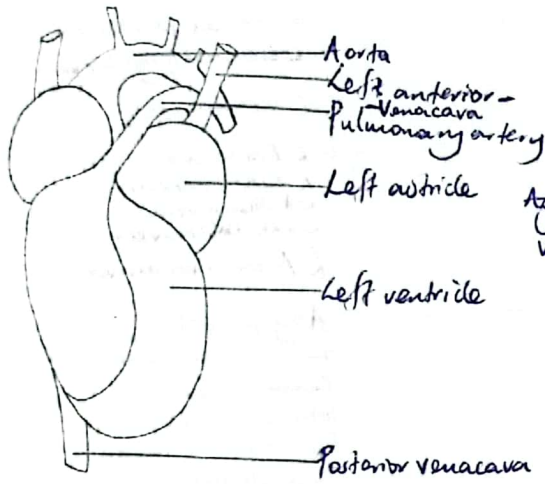


97 A drawing of the blood vessels that drain the urogenital system of the rat.

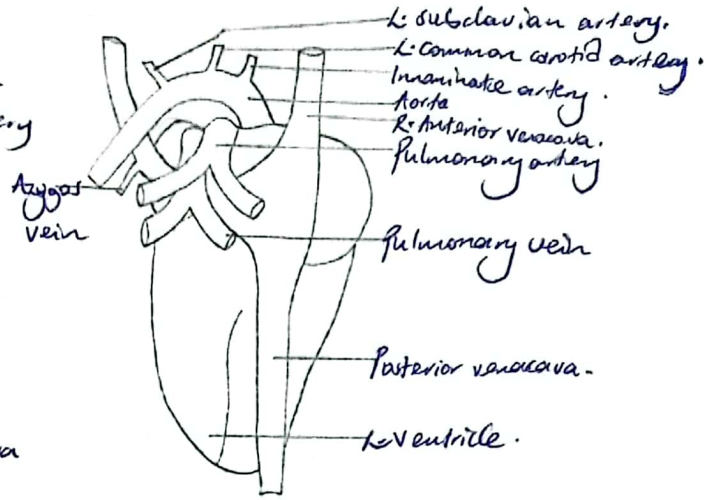


A drawing of the heart and associated blood vessels after flappings have been removed.

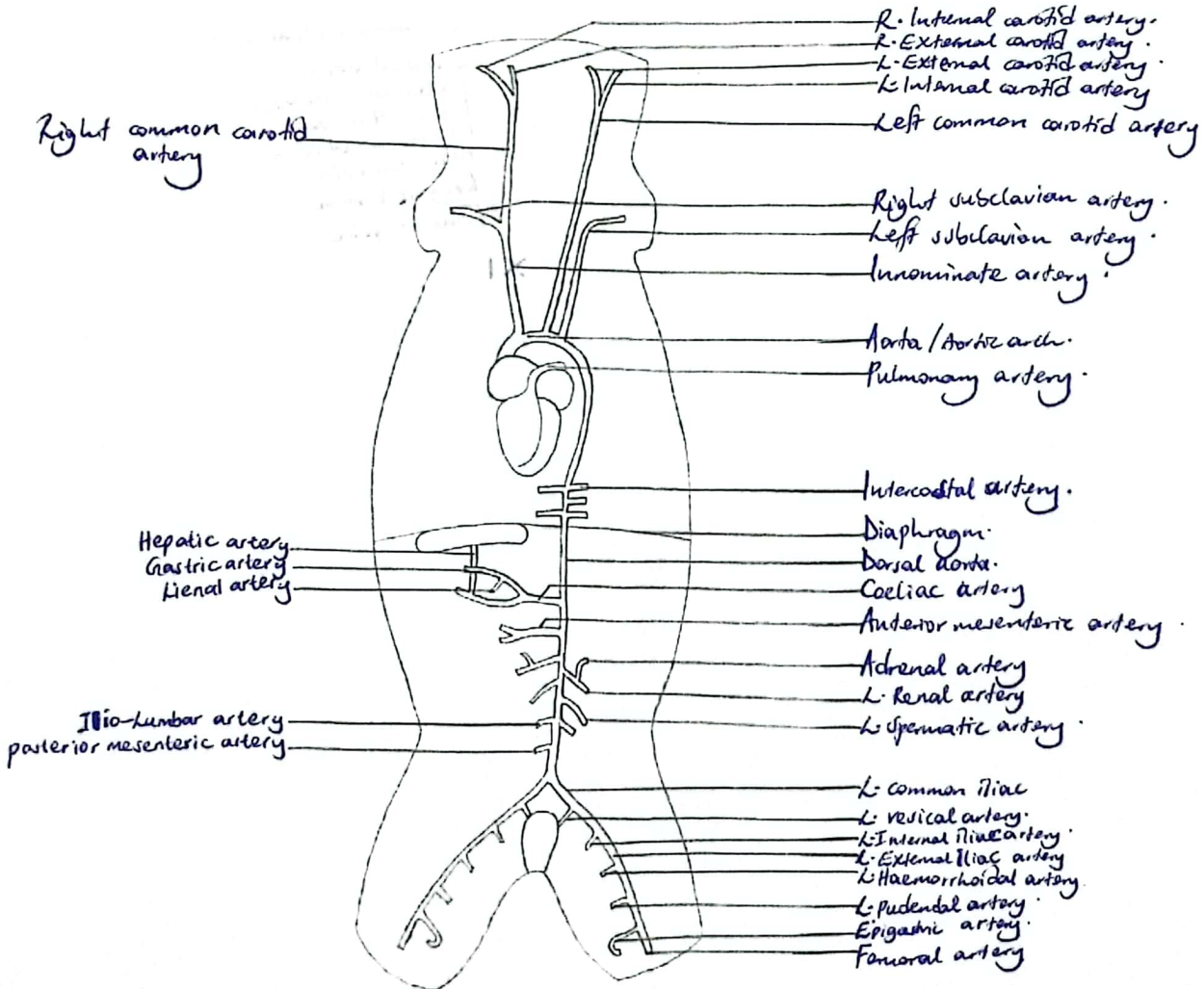
Dorsal view



Ventral view

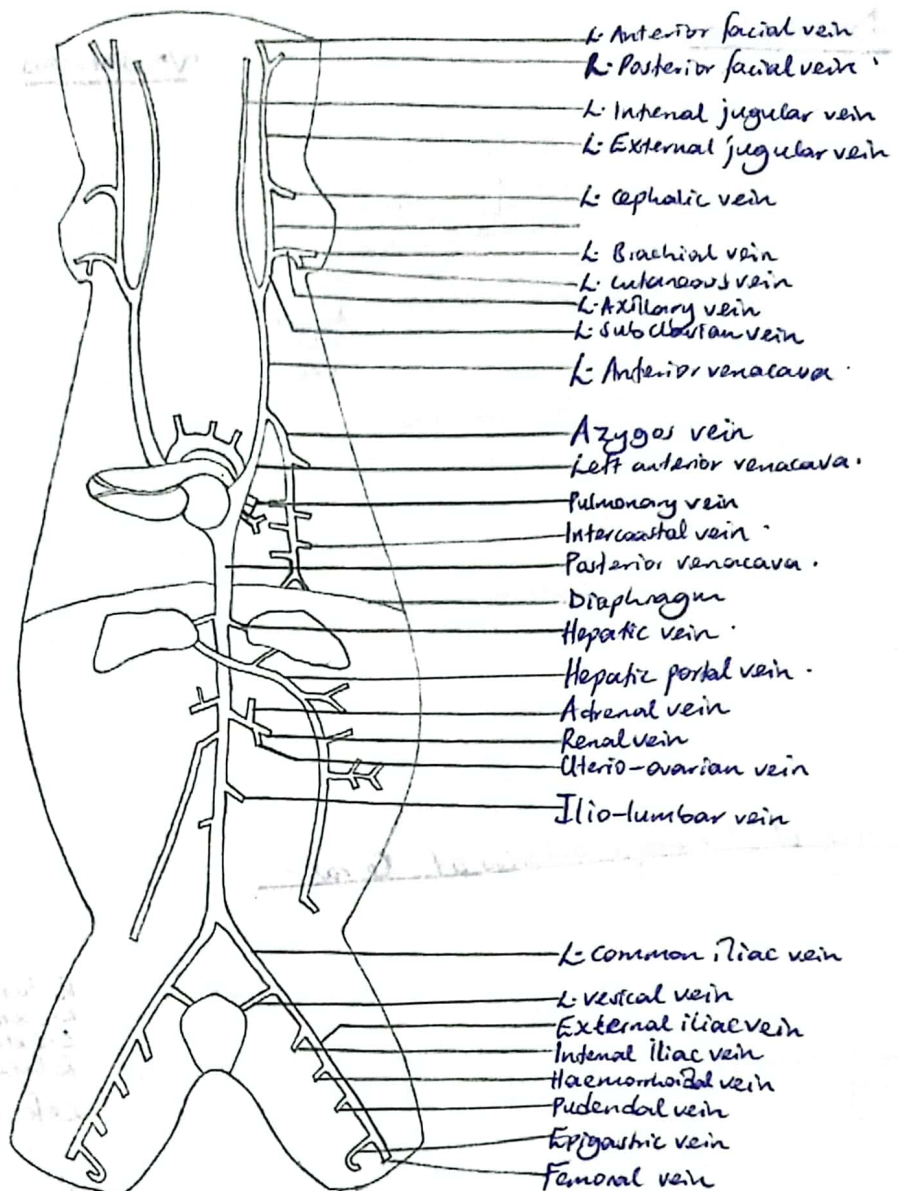


A drawing of the major arteries of the rat.



A drawing of the major veins of the rat.

Downloaded from www.mtutoonline.com, More PASTPAPERS are available



XI

FOR BUSINESS

0708 769427

0771305360